

Parts List

8109.282 Salvador 1~, 3~



Table of Contents

| | |
|----------------------------------|----------|
| Introduction..... | 2 |
| Specially approved products..... | 2 |
| Product Description..... | 3 |
| Products included..... | 3 |
| The data plate..... | 3 |
| Exploded View..... | 4 |
| 8109.282..... | 4 |
| Spare Parts..... | 5 |
| 8109.282..... | 5 |

Introduction

Purpose of this manual

The purpose of this manual is to provide necessary information on spare parts and accessories order.

Disclaimer

Always use genuine Grindex parts. The use of other spare parts or accessories can invalidate any claims for warranty or compensation. Grindex does not take any responsibility for damages that are caused by the use of non-original parts. For more information, contact your local sales and service representative.

Data for ordering spare parts

The following information is needed for spare part orders:

- Serial number of the product
- Part number
- Quantity of bulk material, see * in tables

Specially approved products

Qualification of personnel

Only Grindex or Grindex-authorized service personnel may undertake repair work on Ex-approved products.

Dimensional accuracy inspection

Spare parts marked with (Ex) after the part number are subject to dimensional accuracy inspection when used in specially approved products.

Product Description

Products included

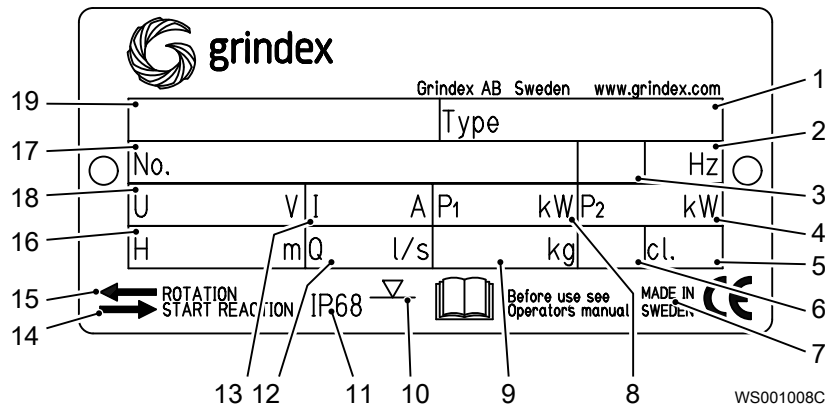
| Pump model | Standard | EX | MSHA | Drainage | Sludge |
|-------------------|----------|----|------|----------|--------|
| Salvador 8109.282 | X | | | | X |

The data plate

Introduction

The data plate is a metal label located on the main body of the pump. The data plate lists key product specifications.

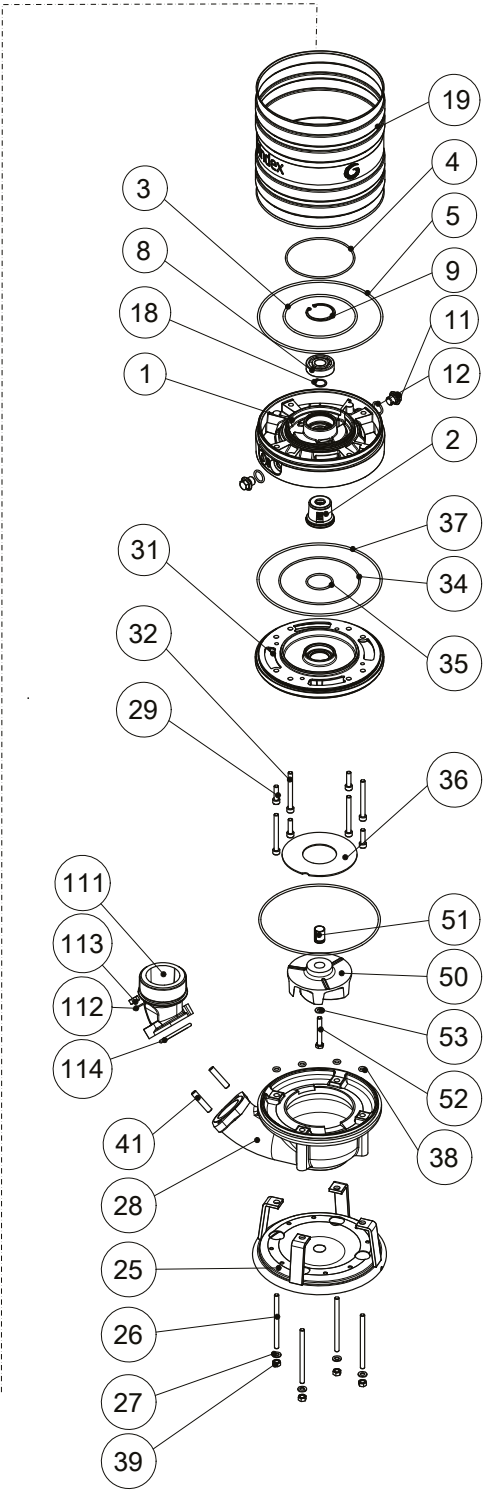
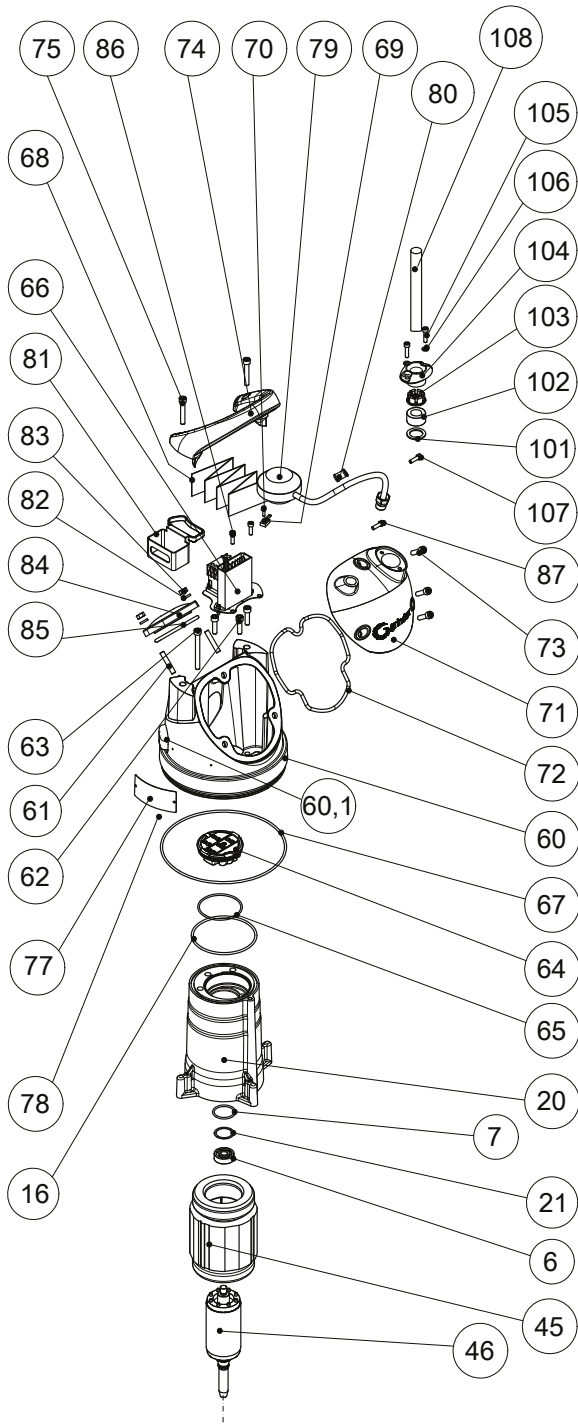
The data plate



1. Pump type number
2. Frequency
3. Phases, type of current
4. Rated shaft power
5. Thermal class
6. Locked rotor code-letter
7. Country of origin
8. Maximum power consumption
9. Product weight
10. Maximum submersion depth
11. Degree of protection
12. Maximum capacity
13. Rated current
14. Direction of the start reaction
15. Direction of the impeller rotation
16. Maximum head
17. Serial number
18. Rated voltage
19. Pump model

Exploded View

8109.282



| PLUG CONTACT | PHASE SHIFTER | O-RING KIT | BASIC REPAIR KIT |
|--------------|---------------|------------|------------------|
| | | | |
| 90 | 92 | 800 | 900 |

20128C_8109_282_expl_view

Spare Parts

8109.282

| Pos. No | Part. No | Denomination | Qty/Version |
|---------|-----------|------------------------------------|-------------|
| | | | 282 |
| 1 | 51 708 00 | Intermediate piece | 1 |
| 2 | 51 728 50 | Mechanical seal | 1 |
| 3 | 410 020 | O-ring 127.0X4.0 NBR | 1 |
| 4 | 50 037 01 | O-ring 119.5X3 NBR | 1 |
| 5 | 410 161 | O-ring 215.0X4.0 NBR | 1 |
| 6 | 50 287 03 | Ball bearing 12X37X12 MM | 1 |
| 7 | 50 037 63 | O-ring 36.2X3.0 FPM | 1 |
| 8 | 50 287 04 | Ball bearing 20X52X15 MM | 1 |
| 9 | 410 834 | Retaining ring | 1 |
| 11 | 133 063 | Inspection screw | 2 |
| 12 | 133 064 | O-ring 19.2X3 NBR | 2 |
| 14 | 410 053 | Oil ISO VG 32 | * |
| 16 | 50 772 84 | O-ring 114X4.0 NBR | 1 |
| 17 | 50 992 00 | Sticker CUT HAZARD | 1 |
| 18 | 50 278 02 | Retaining ring SGA 20 | 1 |
| 19 | 51 720 00 | Outer casing | 1 |
| 20 | 51 681 00 | Stator housing | 1 |
| 21 | 410 904 | Spring washer | 1 |
| 23 | 50 136 00 | Instruction label | 1 |
| 25 | 132 740 | Stand | 1 |
| 26 | 410 919 | Stud | 4 |
| 27 | 50 021 38 | Plain washer 8-A4-170HV | 4 |
| 28 | 50 065 01 | Pump housing | 1 |
| 29 | 140 050 | Hex.socket hd screw M8X30-A2-70 | 4 |
| 31 | 51 710 00 | Seal housing cover | 1 |
| 32 | 410 830 | Hex.socket hd screw M8X80-A2-70 | 4 |
| 34 | 410 833 | O-ring 139.5X3 NBR | 1 |
| 35 | 50 037 61 | O-ring 44.2X3 NBR | 1 |
| 36 | 51 091 00 | Guide plate | 1 |
| 37 | 410 161 | O-ring 215.0X4.0 NBR | 2 |
| 38 | 50 037 18 | O-ring 8X3 NBR | 4 |
| 39 | 50 021 37 | Hexagon nut M8-A4-70 | 4 |
| 41 | 410 169 | Stud 10X35-A2-70 | 2 |

| Pos. No | Part. No | Denomination | Qty/Version |
|---------|-----------|---|-------------|
| | | | 282 |
| 44 | 410 057 | Insulating hose D=14 MM | * |
| 44 | 410 770 | Insulating hose D=18 MM | * |
| 45 | 50 912 00 | Stator 13-10-2b | 1 |
| | | 6-leads 3-phase 50 Hz 2-poles 380V-400V Y | |
| | | 6-leads 3-phase 60 Hz 2-poles 440V-480V Y | |
| | | 6-leads 3-phase 50 Hz 2-poles 220V-240V D | |
| 45 | 50 912 03 | Stator 13-10-2b | 1 |
| | | 6-leads 3-phase 60 Hz 2-poles 380V-400V Y | |
| | | 6-leads 3-phase 60 Hz 2-poles 220V-240V D | |
| 45 | 50 912 02 | Stator 13-10-2b | 1 |
| | | 9-leads 3-phase 60 Hz 2-poles 220V-240V Y// | |
| | | 9-leads 3-phase 60 Hz 2-poles 440V-480V YSER | |
| 45 | 50 912 16 | Stator 13-10-2b | 1 |
| | | 12-leads 3-phase 60 Hz 2-poles 440V-460V DSER | |
| | | 12-leads 3-phase 60 Hz 2-poles 380V-400V Y// | |
| | | 12-leads 3-phase 60 Hz 2-poles 220V-230V D// | |
| 45 | 50 912 18 | Stator 13-10-2b | 1 |
| | | 3-leads 3-phase 50 Hz 2-poles 380V-400V Y | |
| | | 3-leads 3-phase 60 Hz 2-poles 440V-480V Y | |
| 45 | 50 912 04 | Stator 13-10-2b | 1 |
| | | 6-leads 3-phase 50 Hz 2-poles 415V-440V Y | |
| 45 | 50 912 17 | Stator 13-10-2b | 1 |
| | | 3-leads 3-phase 50 Hz 2-poles 500V Y | |
| | | 3-leads 3-phase 60 Hz 2-poles 575V-600V Y | |
| | | 3-leads 3-phase 50 Hz 2-poles 525V-550V Y | |
| 45 | 50 913 00 | Stator 13-10-2b | 1 |
| | | 4-leads 1-phase 50 Hz 2-poles 220V-240V | |
| 45 | 50 913 02 | Stator 13-10-2b | 1 |
| | | 4-leads 1-phase 60 Hz 2-poles 220V-240V | |
| 46 | 51 724 00 | Shaft unit | 1 |
| 50 | 51 092 10 | Impeller | 1 |
| | | N 50Hz 1-phase Max ambient temp=40 DC | |
| 50 | 51 700 00 | Impeller | 1 |
| | | N 50Hz 3-phase Max ambient temp=40 DC | |
| 50 | 51 700 02 | Impeller | 1 |
| | | N 60Hz 1-phase Max ambient temp=40 DC | |
| 50 | 51 700 01 | Impeller | 1 |
| | | N 60Hz 3-phase Max ambient temp=40 DC | |
| 51 | 51 721 00 | Sleeve unit | 1 |

| Pos. No | Part. No | Denomination | Qty/Version |
|---------|-----------|------------------------------------|---|
| | | | 282 |
| 52 | 410 006 | Hexagon head screw M8X60-A4-80 | 1 |
| 53 | 50 021 38 | Plain washer 8-A4-170HV | 1 |
| 60 | 51 783 00 | Cover | 1 |
| 60,1 | 50 869 00 | Air release valve | 1 |
| 60,2 | - | Main cover | 1 |
| 61 | 410 689 | Stud M8X45-A2-70 | 2 |
| 62 | 140 050 | Hex.socket hd screw M8X30-A2-70 | 3 |
| 63 | 410 830 | Hex.socket hd screw M8X80-A2-70 | 1 |
| 64 | 51 711 01 | Terminal plate unit | 1-phase 3-phase |
| 64,1 | 51 641 01 | Terminal plate unit | 1 |
| 64,2 | 51 713 05 | Cable set | 1 |
| 64 | 51 711 00 | Terminal plate unit | 3-phase |
| 64,1 | 51 641 01 | Terminal plate unit | 1 |
| 64,2 | 51 713 05 | Cable set | 1 |
| 65 | 50 037 58 | O-ring 74.5X3.0 NBR | 1 |
| 66 | 51 712 33 | Starter unit | Contacteur unit 50Hz 3- phase 220V - 240V Not CSA approved Contacteur unit 50Hz 3- phase 220V - 240V Float switch Not CSA approved |
| 66,1 | 51 716 00 | Holder | 1 |
| 66,4 | 51 511 07 | Motor protector SMART | 1 |
| 66,5 | 410 111 | Contacteur | 1 |
| 66,6 | 410 008 | Hex.socket hd screw M4X16-A2-70 | 2 |
| 66,7 | 410 012 | Lock nut | 2 |
| 66,8 | 410 008 | Hex.socket hd screw M4X16-A2-70 | 2 |
| 66,9 | 410 012 | Lock nut | 2 |
| 66,12 | 51 713 02 | Cable set | 1 |
| 66,14 | 51 713 04 | Cable set | 1 |
| 66,16 | 51 713 06 | Cable set | 1 |
| 66,17 | 50 900 62 | Single-core cable | 1 |
| 66,18 | 50 509 00 | Cable set | 1 |

| Pos. No | Part. No | Denomination | Qty/Version |
|---------|-----------|---|-------------|
| | | | 282 |
| 66 | 51 712 34 | Starter unit | 1 |
| | | Contactor unit 50Hz 3-phase 380V - 400V Not CSA approved | |
| | | Contactor unit 50Hz 3-phase 380V - 400V Float switch Not CSA approved | |
| 66,1 | 51 716 00 | Holder | 1 |
| 66,4 | 51 511 05 | Motor protector SMART | 1 |
| 66,5 | 410 109 | Contactor | 1 |
| 66,6 | 410 008 | Hex.socket hd screw M4X16-A2-70 | 2 |
| 66,7 | 410 012 | Lock nut | 2 |
| 66,8 | 410 008 | Hex.socket hd screw M4X16-A2-70 | 2 |
| 66,9 | 410 012 | Lock nut | 2 |
| 66,12 | 51 713 02 | Cable set | 1 |
| 66,14 | 51 713 04 | Cable set | 1 |
| 66,16 | 51 713 06 | Cable set | 1 |
| 66,17 | 50 900 62 | Single-core cable | 1 |
| 66,18 | 50 509 00 | Cable set | 1 |
| 66 | 51 712 35 | Starter unit | 1 |
| | | Contactor unit 50Hz 3-phase 415V - 440V Not CSA approved | |
| 66,1 | 51 716 00 | Holder | 1 |
| 66,4 | 51 511 05 | Motor protector SMART | 1 |
| 66,5 | 410 163 | Contactor | 1 |
| 66,6 | 410 008 | Hex.socket hd screw M4X16-A2-70 | 2 |
| 66,7 | 410 012 | Lock nut | 2 |
| 66,8 | 410 008 | Hex.socket hd screw M4X16-A2-70 | 2 |
| 66,9 | 410 012 | Lock nut | 2 |
| 66,12 | 51 713 02 | Cable set | 1 |
| 66,14 | 51 713 04 | Cable set | 1 |
| 66,16 | 51 713 06 | Cable set | 1 |
| 66,17 | 50 900 62 | Single-core cable | 1 |
| 66,18 | 50 509 00 | Cable set | 1 |
| 66 | 51 712 36 | Starter unit | 1 |
| | | Contactor unit 50Hz 3-phase 500V - 500V Not CSA approved | |
| | | Contactor unit 50Hz 3-phase 525V - 550V Not CSA approved | |
| 66,1 | 51 716 00 | Holder | 1 |

| Pos. No | Part. No | Denomination | Qty/Version |
|---------|-----------|--|-------------|
| | | | 282 |
| 66,4 | 51 511 05 | Motor protector SMART | 1 |
| 66,5 | 410 110 | Contactor | 1 |
| 66,6 | 410 008 | Hex.socket hd screw M4X16-A2-70 | 2 |
| 66,7 | 410 012 | Lock nut | 2 |
| 66,8 | 410 008 | Hex.socket hd screw M4X16-A2-70 | 2 |
| 66,9 | 410 012 | Lock nut | 2 |
| 66,12 | 51 713 02 | Cable set | 1 |
| 66,14 | 51 713 04 | Cable set | 1 |
| 66,16 | 51 713 06 | Cable set | 1 |
| 66,17 | 50 900 62 | Single-core cable | 1 |
| 66,18 | 50 509 00 | Cable set | 1 |
| 66 | 51 712 43 | Starter unit | 1 |
| | | Contactor unit 60Hz 3- phase 220V - 240V CSA approved | |
| | | Contactor unit 60Hz 3- phase 220V - 240V Float switch CSA approved | |
| 66,1 | 51 716 00 | Holder | 1 |
| 66,4 | 51 511 08 | Motor protector SMART | 1 |
| 66,5 | 410 111 | Contactor | 1 |
| 66,6 | 410 008 | Hex.socket hd screw M4X16-A2-70 | 2 |
| 66,7 | 410 012 | Lock nut | 2 |
| 66,8 | 410 008 | Hex.socket hd screw M4X16-A2-70 | 2 |
| 66,9 | 410 012 | Lock nut | 2 |
| 66,12 | 51 713 02 | Cable set | 1 |
| 66,14 | 51 713 04 | Cable set | 1 |
| 66,16 | 51 713 06 | Cable set | 1 |
| 66,17 | 50 900 62 | Single-core cable | 1 |
| 66,18 | 50 509 00 | Cable set | 1 |
| 66 | 51 712 44 | Starter unit | 1 |
| | | Contactor unit 60Hz 3- phase 380V - 400V Float switch Not CSA approved | |
| | | Contactor unit 60Hz 3- phase 380V - 400V CSA approved | |
| 66,1 | 51 716 00 | Holder | 1 |
| 66,4 | 51 511 06 | Motor protector SMART | 1 |
| 66,5 | 410 109 | Contactor | 1 |
| 66,6 | 410 008 | Hex.socket hd screw M4X16-A2-70 | 2 |

| Pos. No | Part. No | Denomination | Qty/Version |
|---------|-----------|---|-------------|
| | | | 282 |
| 66,7 | 410 012 | Lock nut | 2 |
| 66,8 | 410 008 | Hex.socket hd screw M4X16-A2-70 | 2 |
| 66,9 | 410 012 | Lock nut | 2 |
| 66,12 | 51 713 02 | Cable set | 1 |
| 66,14 | 51 713 04 | Cable set | 1 |
| 66,16 | 51 713 06 | Cable set | 1 |
| 66,17 | 50 900 62 | Single-core cable | 1 |
| 66,18 | 50 509 00 | Cable set | 1 |
| 66 | 51 712 45 | Starter unit | 1 |
| | | Contactor unit 60Hz 3- phase 440V - 480V CSA approved | |
| 66,1 | 51 716 00 | Holder | 1 |
| 66,4 | 51 511 06 | Motor protector SMART | 1 |
| 66,5 | 410 163 | Contactor | 1 |
| 66,6 | 410 008 | Hex.socket hd screw M4X16-A2-70 | 2 |
| 66,7 | 410 012 | Lock nut | 2 |
| 66,8 | 410 008 | Hex.socket hd screw M4X16-A2-70 | 2 |
| 66,9 | 410 012 | Lock nut | 2 |
| 66,12 | 51 713 02 | Cable set | 1 |
| 66,14 | 51 713 04 | Cable set | 1 |
| 66,16 | 51 713 06 | Cable set | 1 |
| 66,17 | 50 900 62 | Single-core cable | 1 |
| 66,18 | 50 509 00 | Cable set | 1 |
| 66 | 51 712 47 | Starter unit | 1 |
| | | Contactor unit 60Hz 3- phase 575V - 600V CSA approved | |
| 66,1 | 51 716 00 | Holder | 1 |
| 66,4 | 51 511 06 | Motor protector SMART | 1 |
| 66,5 | 410 902 | Contactor | 1 |
| 66,6 | 410 008 | Hex.socket hd screw M4X16-A2-70 | 2 |
| 66,7 | 410 012 | Lock nut | 2 |
| 66,8 | 410 008 | Hex.socket hd screw M4X16-A2-70 | 2 |
| 66,9 | 410 012 | Lock nut | 2 |
| 66,12 | 51 713 02 | Cable set | 1 |
| 66,14 | 51 713 04 | Cable set | 1 |
| 66,16 | 51 713 06 | Cable set | 1 |
| 66,17 | 50 900 62 | Single-core cable | 1 |

| Pos. No | Part. No | Denomination | Qty/Version |
|---------|-----------|---|-------------|
| | | | 282 |
| 66,18 | 50 509 00 | Cable set | 1 |
| 66 | 51 712 38 | Starter unit Contactor unit 50Hz 3-phase 380V - 400V Float switch with isolated input Not CSA approved | 1 |
| 66,1 | 51 716 00 | Holder | 1 |
| 66,4 | 51 511 05 | Motor protector SMART | 1 |
| 66,5 | 410 109 | Contactor | 1 |
| 66,6 | 410 008 | Hex.socket hd screw M4X16-A2-70 | 2 |
| 66,7 | 410 012 | Lock nut | 2 |
| 66,8 | 410 008 | Hex.socket hd screw M4X16-A2-70 | 2 |
| 66,9 | 410 012 | Lock nut | 2 |
| 66,14 | 51 713 04 | Cable set | 1 |
| 66,16 | 51 713 06 | Cable set | 1 |
| 66,17 | 50 900 62 | Single-core cable | 1 |
| 66,18 | 50 509 00 | Cable set | 1 |
| 66,20 | 51 779 00 | Supervision relay | 1 |
| 66,21 | 50 457 00 | Cable tie | 1 |
| 66,22 | 410 034 | Closed-end splice 3-6(AWG 12-10) L=18 | 1 |
| 66 | 51 712 39 | Starter unit Contactor unit 50Hz 3-phase 415V - 440V Float switch with isolated input Not CSA approved | 1 |
| 66,1 | 51 716 00 | Holder | 1 |
| 66,4 | 51 511 05 | Motor protector SMART | 1 |
| 66,5 | 410 163 | Contactor | 1 |
| 66,6 | 410 008 | Hex.socket hd screw M4X16-A2-70 | 2 |
| 66,7 | 410 012 | Lock nut | 2 |
| 66,8 | 410 008 | Hex.socket hd screw M4X16-A2-70 | 2 |
| 66,9 | 410 012 | Lock nut | 2 |
| 66,14 | 51 713 04 | Cable set | 1 |
| 66,16 | 51 713 06 | Cable set | 1 |
| 66,17 | 50 900 62 | Single-core cable | 1 |
| 66,18 | 50 509 00 | Cable set | 1 |
| 66,20 | 51 779 00 | Supervision relay | 1 |
| 66,21 | 50 457 00 | Cable tie | 1 |
| 66,22 | 410 034 | Closed-end splice 3-6(AWG 12-10) L=18 | 1 |

| Pos. No | Part. No | Denomination | Qty/Version |
|---------|-----------|--|-------------|
| | | | 282 |
| 66 | 51 712 40 | Starter unit Contactor unit 50Hz 3-phase 525V - 550V Float switch with isolated input Not CSA approved Contactor unit 50Hz 3-phase 500V - 500V Float switch with isolated input Not CSA approved | 1 |
| 66,1 | 51 716 00 | Holder | 1 |
| 66,4 | 51 511 05 | Motor protector SMART | 1 |
| 66,5 | 410 902 | Contactor | 1 |
| 66,6 | 410 008 | Hex.socket hd screw M4X16-A2-70 | 2 |
| 66,7 | 410 012 | Lock nut | 2 |
| 66,8 | 410 008 | Hex.socket hd screw M4X16-A2-70 | 2 |
| 66,9 | 410 012 | Lock nut | 2 |
| 66,14 | 51 713 04 | Cable set | 1 |
| 66,16 | 51 713 06 | Cable set | 1 |
| 66,17 | 50 900 62 | Single-core cable | 1 |
| 66,18 | 50 509 00 | Cable set | 1 |
| 66,20 | 51 779 00 | Supervision relay | 1 |
| 66,21 | 50 457 00 | Cable tie | 1 |
| 66,22 | 410 034 | Closed-end splice 3-6(AWG 12-10) L=18 | 1 |
| 66 | 51 712 49 | Starter unit Contactor unit 60Hz 3-phase 440V - 480V Float switch with isolated input CSA approved | 1 |
| 66,1 | 51 716 00 | Holder | 1 |
| 66,4 | 51 511 06 | Motor protector SMART | 1 |
| 66,5 | 410 163 | Contactor | 1 |
| 66,6 | 410 008 | Hex.socket hd screw M4X16-A2-70 | 2 |
| 66,7 | 410 012 | Lock nut | 2 |
| 66,8 | 410 008 | Hex.socket hd screw M4X16-A2-70 | 2 |
| 66,9 | 410 012 | Lock nut | 2 |
| 66,14 | 51 713 04 | Cable set | 1 |
| 66,16 | 51 713 06 | Cable set | 1 |
| 66,17 | 50 900 62 | Single-core cable | 1 |
| 66,18 | 50 509 00 | Cable set | 1 |
| 66,20 | 51 779 00 | Supervision relay | 1 |
| 66,21 | 50 457 00 | Cable tie | 1 |

| Pos. No | Part. No | Denomination | Qty/Version |
|---------|-----------|--|-------------|
| | | | 282 |
| 66,22 | 410 034 | Closed-end splice 3-6(AWG 12-10) L=18 | 1 |
| 66 | 51 712 50 | Starter unit Contactor unit 60Hz 3-phase 575V - 600V Float switch with isolated input CSA approved | 1 |
| 66,1 | 51 716 00 | Holder | 1 |
| 66,4 | 51 511 06 | Motor protector SMART | 1 |
| 66,5 | 410 902 | Contactor | 1 |
| 66,6 | 410 008 | Hex.socket hd screw M4X16-A2-70 | 2 |
| 66,7 | 410 012 | Lock nut | 2 |
| 66,8 | 410 008 | Hex.socket hd screw M4X16-A2-70 | 2 |
| 66,9 | 410 012 | Lock nut | 2 |
| 66,14 | 51 713 04 | Cable set | 1 |
| 66,16 | 51 713 06 | Cable set | 1 |
| 66,17 | 50 900 62 | Single-core cable | 1 |
| 66,18 | 50 509 00 | Cable set | 1 |
| 66,20 | 51 779 00 | Supervision relay | 1 |
| 66,21 | 50 457 00 | Cable tie | 1 |
| 66,22 | 410 034 | Closed-end splice 3-6(AWG 12-10) L=18 | 1 |
| 66 | 51 712 02 | Starter unit Capacitor unit 50Hz 1-phase 220V - 240V 1-phase Not CSA approved Capacitor unit 60Hz 1-phase 220V - 240V 1-phase Float switch CSA approved Capacitor unit 50Hz 1-phase 220V - 240V 1-phase Float switch Not CSA approved Capacitor unit 60Hz 1-phase 220V - 240V 1-phase CSA approved | 1 |
| 66,1 | 51 716 00 | Holder | 1 |
| 66,2 | 51 830 00 | Capacitor | 1 |
| 66,3 | 410 376 | Capacitor 20MF 400V | 1 |
| 66,4 | 50 906 02 | Start relay SNT | 1 |
| 66,6 | 410 008 | Hex.socket hd screw M4X16-A2-70 | 2 |
| 66,7 | 410 012 | Lock nut | 2 |
| 66,10 | 51 004 00 | Cable set | 1 |
| 66,11 | 51 713 01 | Cable set | 1 |

| Pos. No | Part. No | Denomination | Qty/Version |
|---------|-----------|---|-------------|
| | | | 282 |
| 66,12 | 51 713 02 | Cable set | 1 |
| 66,19 | 50 021 36 | Lock nut M8-A4-70 | 2 |
| 67 | 410 161 | O-ring 215.0X4.0 NBR | 1 |
| 68 | 51 671 00 | Connection plate | 1 |
| 69 | 51 725 00 | Thermal detector unit | 1 |
| 70 | 410 008 | Hex.socket hd screw M4X16-A2-70 | 1 |
| 71 | 51 687 00 | Cover | 1 |
| 71 | 51 687 01 | Cover Float switch | 1 |
| 72 | 51 723 00 | Gasket | 1 |
| 73 | 140 050 | Hex.socket hd screw M8X30-A2-70 | 3 |
| 74 | 51 691 00 | Handle | 1 |
| 75 | 50 771 32 | Hex.socket hd screw M8X50-A2-70 | 2 |
| 77 | 50 888 00 | Plate-blank | 1 |
| 78 | 410 000 | Drive screw 4X5-A2/A4 | 4 |
| 78 | 410 000 | Drive screw 4X5-A2/A4 | 2 |
| 79 | 51 726 03 | Level regulator unit EU | 1 |
| | | Capacitor unit 50Hz 1- phase 220V - 240V 1-phase Float switch Not CSA approved | |
| | | Contactor unit 50Hz 3- phase 220V - 240V Float switch Not CSA approved | |
| 79 | 51 726 04 | Level regulator unit EU | 1 |
| | | Contactor unit 60Hz 3- phase 380V - 400V Float switch Not CSA approved | |
| | | Contactor unit 50Hz 3- phase 415V - 440V Float switch with isolated input Not CSA approved | |
| | | Contactor unit 50Hz 3- phase 525V - 550V Float switch with isolated input Not CSA approved | |
| | | Contactor unit 50Hz 3- phase 380V - 400V Float switch Not CSA approved | |
| | | Contactor unit 50Hz 3- phase 380V - 400V Float switch with isolated input Not CSA approved | |
| | | Contactor unit 50Hz 3- phase 500V - 500V Float switch with isolated input Not CSA approved | |

| Pos. No | Part. No | Denomination | Qty/Version |
|---------|-----------|--|-------------|
| | | | 282 |
| 79 | 51 726 05 | Level regulator unit US/CDN | 1 |
| | | Contactor unit 60Hz 3-phase 575V - 600V Float switch with isolated input CSA approved | |
| | | Capacitor unit 60Hz 1-phase 220V - 240V 1-phase Float switch CSA approved | |
| | | Contactor unit 60Hz 3-phase 440V - 480V Float switch with isolated input CSA approved | |
| | | Contactor unit 60Hz 3-phase 220V - 240V Float switch CSA approved | |
| 80 | 410 077 | Cable clamp STAINLESS STEEL, CR | 1 |
| 82 | 410 014 | Plain washer A2-170HV M8 | 2 |
| 83 | 50 021 37 | Hexagon nut M8-A4-70 | 2 |
| 84 | 50 884 00 | Cover | 1 |
| 85 | 410 015 | O-ring 79.2X5.7-NBR | 1 |
| 86 | 50 020 00 | Hex.socket hd screw M6X20-A2-70 | 2 |
| 87 | 50 020 00 | Hex.socket hd screw M6X20-A2-70 | 1 |
| 88 | 51 800 00 | Sticker | 1 |
| 90 | 50 100 00 | Plug contact | 1 |
| | | 3-phase 50 Hz 380V - 415V Current range: 0 - 16A Plug combined with short cable: No cable Supply connection: CEE 5-PLUG 16A | |
| | | Starter (Phase shifter) 3-phase 50/60 Hz 380V - 415V Current range: 0 - 16A Plug combined with short cable: SUBCAB 4G1,5 Supply connection: CEE 5-PLUG 16A | |
| 90 | 410 684 | Plug contact | 1 |
| | | 3-phase 50 Hz 380V - 415V Current range: 0 - 16A Plug combined with short cable: No cable Supply connection: CEE 4-PLUG 16A | |
| 90 | 410 038 | Plug contact | 1 |
| | | 1-phase 60 Hz 0V - 250V Current range: 0 - 15A Plug combined with short cable: No cable Supply connection: Plug NEMA 6-15 15A 250V | |

| Pos. No | Part. No | Denomination | Qty/Version |
|---------|-----------|--|-------------|
| | | | 282 |
| 90 | 410 042 | Plug contact | 1 |
| | | 1-phase 50 Hz 220V - 240V Current range: 0 - 16A Plug combined with short cable: No cable Supply connection: CEE 3-PLUG 16A | |
| 90 | 410 035 | Plug contact | 1 |
| | | 1-phase 50 Hz 0V - 250V Current range: 0 - 10A Plug combined with short cable: No cable Supply connection: Plug T12 SEV1011 L+N+PE, 250 V 10 A | |
| 91 | 131 040 | Motor cable subcab | * |
| | | Starter (Phase shifter) 3- phase 50/60 Hz 380V - 415V Current range: 0 - 16A Plug combined with short cable: SUBCAB 4G1,5 Supply connection: CEE 5- PLUG 16A | |
| | | Starter (Phase shifter) 3- phase 50/60 Hz 220V - 575V Current range: 0 - 16A Plug combined with short cable: SUBCAB 4G1,5 | |
| 91 | 410 065 | Motor cable subcab | * |
| | | Starter (Phase shifter) 3- phase 50/60 Hz 220V - 575V Current range: 0 - 16A Plug combined with short cable: SUBCAB 14AWG/4 | |
| 92 | 50 102 00 | Phase shifter | 1 |
| 93 | 51 735 00 | Sticker | 1 |
| 94 | 51 735 01 | Sticker | 1 |
| 94 | 51 735 01 | Sticker | 2 |
| 100 | 410 056 | Insulating hose D=14 MM | * |
| 101 | 50 127 04 | Plain washer (10)-22 MM | 1 |
| 102 | 410 727 | Seal sleeve (10)-12 MM | 1 |
| | | SUBCAB 3G1,5 10 - 11mm Max 750V | |
| | | SUBCAB 4G1,5 10,50 - 11,50mm Max 750V | |
| | | SUBCAB 3G1,5 10 - 11mm Supply connection: Plug 532.1U Max 250V | |
| | | SUBCAB 3G2,5 11 - 12mm Max 750V | |
| 102 | 410 729 | Seal sleeve (14)-16 MM | 1 |
| | | Screened 3x1,5 13,50 - 14,90mm Max 1000V | |
| | | SUBCAB 4G1,5+2x1,5 16 - 17mm Max 750V | |
| | | SUBCAB 14AWG/4 14,20 - 15,20mm Max 600V | |

| Pos. No | Part. No | Denomination | Qty/Version | |
|---------|-----------|------------------------------------|--|---|
| | | | 282 | |
| 102 | 410 728 | Seal sleeve (12)-14 MM | SUBCAB 14AWG/3 13,20 - 14,20mm Max 600V Screened 3x1,5 13,50 - 14,90mm Max 1000V SUBCAB 4G2,5 12,50 - 13,50mm Max 750V | 1 |
| 102 | 410 730 | Seal sleeve (16)-18 MM | SUBCAB 12AWG/4 17 - 18mm Max 600V | 1 |
| 102 | 410 731 | Seal sleeve (18)-20 MM | SUBCAB S3x2,5+3x2,5/3+S(4x0,5) 18 - 20mm Max 1000V | 1 |
| 103 | 50 926 00 | Cable clip (10)-12 MM | SUBCAB 3G1,5 10 - 11mm Max 750V SUBCAB 4G1,5 10,50 - 11,50mm Max 750V SUBCAB 3G1,5 10 - 11mm Supply connection: Plug 532.1U Max 250V SUBCAB 3G2,5 11 - 12mm Max 750V | 1 |
| 103 | 50 926 02 | Cable clip (14)-16 MM | Screened 3x1,5 13,50 - 14,90mm Max 1000V SUBCAB 4G1,5+2x1,5 16 - 17mm Max 750V SUBCAB 14AWG/4 14,20 - 15,20mm Max 600V | 1 |
| 103 | 50 926 01 | Cable clip (12)-14 MM | SUBCAB 14AWG/3 13,20 - 14,20mm Max 600V Screened 3x1,5 13,50 - 14,90mm Max 1000V SUBCAB 4G2,5 12,50 - 13,50mm Max 750V | 1 |
| 103 | 50 926 03 | Cable clip (16)-18 MM | SUBCAB 12AWG/4 17 - 18mm Max 600V | 1 |
| 103 | 50 926 04 | Cable clip (18)-20 MM | SUBCAB S3x2,5+3x2,5/3+S(4x0,5) 18 - 20mm Max 1000V | 1 |
| 104 | 50 932 00 | Entrance flange | | 1 |
| 105 | 131 310 | Hex.socket hd screw M6X25-A4-70 | | 2 |
| 106 | 410 013 | Plain washer 6-A4-170 | | 2 |
| 107 | 50 020 00 | Hex.socket hd screw M6X20-A2-70 | | 1 |
| 107 | 50 020 00 | Hex.socket hd screw M6X20-A2-70 | | 2 |
| 108 | 51 714 01 | Motor cable unit | SUBCAB 3G1,5 10 - 11mm L= 20m Supply connection: Plug 532.1U Max 250V | 1 |

| Pos. No | Part. No | Denomination | | Qty/Version |
|---------|-----------|--------------------------|--|-------------|
| | | | | 282 |
| 108 | 51 714 02 | Motor cable unit | SUBCAB 3G1,5 10 - 11mm L= 20m Max 750V | 1 |
| 108 | 51 714 05 | Motor cable unit | SUBCAB 4G1,5 10,50 - 11,50mm L= 20m Max 750V | 1 |
| 108 | 51 714 10 | Motor cable unit | SUBCAB 4G1,5+2x1,5 16 - 17mm L= 20m Max 750V | 1 |
| 108 | 51 714 06 | Motor cable unit | SUBCAB 4G2,5 12,50 - 13,50mm L= 20m Max 750V | 1 |
| 108 | 51 714 03 | Motor cable unit | SUBCAB 3G2,5 11 - 12mm L= 20m Max 750V | 1 |
| 108 | 51 714 04 | Motor cable unit | SUBCAB 14AWG/3 13,20 - 14,20mm L= 16m Max 600V | 1 |
| 108 | 51 714 07 | Motor cable unit | SUBCAB 14AWG/4 14,20 - 15,20mm L= 16m Max 600V | 1 |
| 108 | 51 714 08 | Motor cable unit | SUBCAB 12AWG/4 17 - 18mm L= 16m Max 600V | 1 |
| 108 | 51 714 09 | Motor cable unit | Screened 3x1,5 13,50 - 14,90mm L= 20m Max 1000V | 1 |
| 108 | 51 714 19 | Motor cable unit | SUBCAB S3x2,5+3x2,5/3+S(4x0,5) 18 - 20mm L= 20m Max 1000V | 1 |
| 111 | 140 152 | Discharge connection | DN 75 Hose 3" aluminium | 1 |
| 111 | 130 890 | Discharge connection | DN 75 Thread : ISO G3A Outer aluminium | 1 |
| 111 | 50 348 00 | Discharge connection | DN 75 Thread : NPT 3-8 Outer aluminium | 1 |
| 112 | 50 022 26 | Plain washer 10-A4-170HV | | 2 |
| 113 | 50 022 22 | Hexagon nut M10-A4-70 | | 2 |
| 114 | 140 366 | O-ring 56.52X5.34 NBR | | 1 |
| 125 | 51 095 00 | Anode unit | | 1 |
| 800 | 51 731 00 | O-ring kit | NBR | 1 |
| 801 | 51 095 00 | Anode unit | | 1 |
| 900 | 51 734 00 | Basic repair kit | NBR TYPE P SSIC/ SSIC:SSK/SSK | 1 |
| 900,1 | 50 287 03 | Ball bearing 12X37X12 MM | | 1 |
| 900,2 | 50 287 04 | Ball bearing 20X52X15 MM | | 1 |
| 900,3 | 51 728 50 | Mechanical seal | | 1 |
| 900,4 | 51 731 00 | O-ring kit | | 1 |
| 900,5 | 51 829 00 | Sticker | | 1 |