

Parts List

8117.390 Master Inox



Table of Contents

| | |
|----------------------------------|----------|
| Introduction..... | 2 |
| Specially approved products..... | 2 |
| Product Description..... | 3 |
| The data plate..... | 3 |
| Exploded Views..... | 4 |
| 8117.390..... | 4 |
| Spare Parts..... | 5 |
| 8117.390..... | 5 |

Introduction

Purpose of this manual

The purpose of this manual is to provide necessary information on spare parts and accessories order.

Disclaimer

Always use genuine Grindex parts. The use of other spare parts or accessories can invalidate any claims for warranty or compensation. Grindex does not take any responsibility for damages that are caused by the use of non-original parts. For more information, contact your local sales and service representative.

Data for ordering spare parts

The following information is needed for spare part orders:

- Serial number of the product
- Part number
- Quantity of bulk material, see * in tables

Specially approved products

Qualification of personnel


Only Grindex or Grindex-authorized service personnel may undertake repair work on Ex-approved products.

Dimensional accuracy inspection

Spare parts marked with (Ex) after the part number are subject to dimensional accuracy inspection.

Product Description

Products included

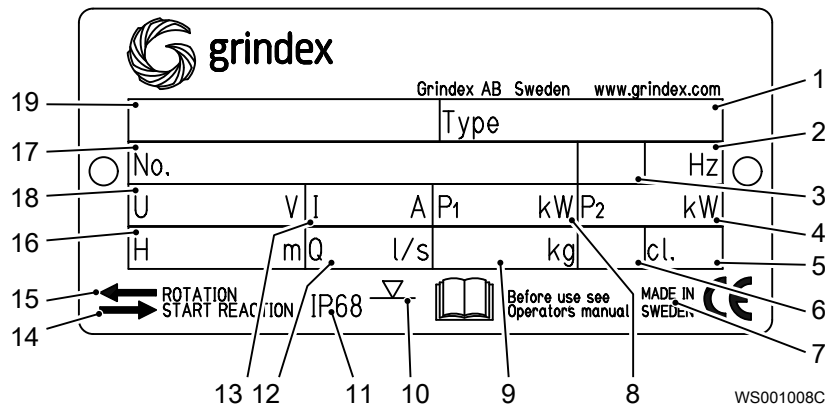
| Pump model | Approvals |
|----------------------|--|
| Master INOX 8117.390 | Standard European Norm (EN) <ul style="list-style-type: none"> • ATEX Directive • EN 1127-1, EN 60079-0, EN 60079-15 •  II 3G Ex nA/nC c IIC T1...T4 |

The data plate

Introduction

The data plate is a metal label located on the main body of the pump. The data plate lists key product specifications.

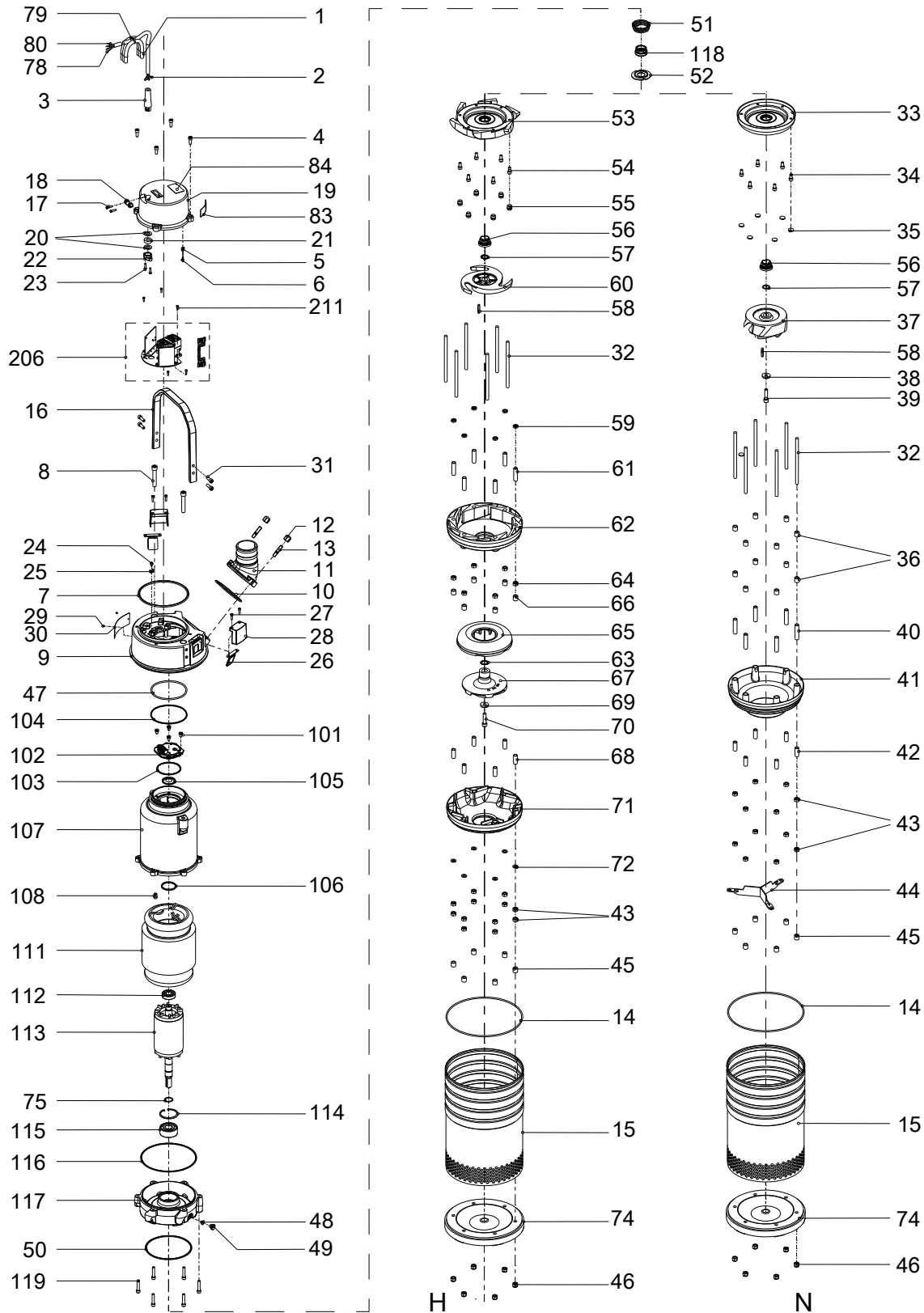
The data plate



1. Pump type number
2. Frequency
3. Phases, type of current
4. Rated shaft power
5. Thermal class
6. Locked rotor code-letter
7. Country of origin
8. Maximum power consumption
9. Product weight
10. Maximum submersion depth
11. Degree of protection
12. Maximum capacity
13. Rated current
14. Direction of the start reaction
15. Direction of the impeller rotation
16. Maximum head
17. Serial number
18. Rated voltage
19. Pump model

Exploded Views

8117.390



20185A_8117_390_expl_view

Spare Parts

8117.390

| Pos. No | Part. No | Denomination | Qty/Version |
|---------|-----------|---|-------------|
| | | | 390 |
| 1 | 131 039 | Motor cable subcab Power cable x 1 SUBCAB 4G2,5 12,50 - 13,50mm Starter (Phase shifter) 220V - 575 V Current range: 0 - 16 A | * |
| 1 | 133 139 | Motor cable subcab Starter 50/60 Hz Current range: 0 - 22 A Starter 50/60 Hz Current range: 0 - 48 A Power cable x 1 SUBCAB 4G4 16 - 17mm | * |
| 1 | 410 065 | Motor cable subcab Starter (Phase shifter) 220V - 575 V Current range: 0 - 16 A Power cable x 1 SUBCAB 14AWG/4 14,20 - 15,20mm | * |
| 2 | 50 040 04 | Flat pin sleeve 1-2.5MM2 | 4 |
| 2 | 50 040 05 | Insulating sleeve 0.5-6 MM2 | 4 |
| 2 | 50 040 07 | Flat pin sleeve 2.5-6MM2 | 4 |
| 3 | 50 428 01 | Bending protection SUBCAB 4G2,5 | 1 |
| 3 | 50 428 03 | Bending protection SUBCAB 4G4 | 1 |
| 3 | 50 428 02 | Bending protection SUBCAB 14AWG/4 | 1 |
| 4 | 50 021 33 | Hex.socket hd screw M8X20-A4-80 | 4 |
| 5 | 50 119 00 | Flat pin sheet | 1 |
| 6 | 50 018 04 | Hex.socket hd screw M4X6- A4-70 | 1 |
| 7 | 50 037 22 | O-ring 159.3X5.7 FPM | 1 |
| 8 | 50 023 00 | Hex.socket hd screw M12X70-A4-70 | 2 |
| 9 | 50 737 00 | Main cover | 1 |
| 10 | 50 037 23 | O-ring 104.14X5.34 FPM | 1 |
| 11 | 50 732 00 | Discharge connection DN 75 Hose | 1 |
| 11 | 50 732 01 | Discharge connection DN 75 Thread : ISO G3A Outer | 1 |
| 11 | 50 732 02 | Discharge connection DN 75 Thread : NPT 3-8 Outer | 1 |
| 11 | 50 734 00 | Discharge connection DN 100 Hose | 1 |

| Pos. No | Part. No | Denomination | Qty/Version |
|---------|-----------|---|-------------|
| | | | 390 |
| 11 | 50 734 01 | Discharge connection DN 100 Thread : ISO G4A Outer | 1 |
| 11 | 50 734 02 | Discharge connection DN 100 Thread : NPT 4-8 Outer | 1 |
| 12 | 50 022 25 | Acorn nut | 2 |
| 13 | 50 022 21 | Stud | 2 |
| 14 | 50 037 24 | O-ring 259.3X3.0 FPM | 1 |
| 15 | 50 062 19 | Outer casing N | 1 |
| 15 | 50 062 18 | Outer casing H | 1 |
| 16 | 50 721 00 | Lifting handle | 1 |
| 17 | 50 019 00 | Hex.socket hd screw M5X18-A4-70 | 2 |
| 18 | 50 725 00 | Cable clip | 1 |
| 19 | 50 708 00 | Entrance cover | 1 |
| 20 | 50 016 14 | Plain washer 14.5X26.5X2- Cable entry (12)-14mm A4-70 | 2 |
| 20 | 50 016 15 | Plain washer 16.5X26.5X2- Cable entry (14)-16mm A4-70 | 2 |
| 20 | 50 016 16 | Plain washer 18.5X26.5X2- (16)-18mm A4-70 | 2 |
| 21 | 50 015 01 | Seal sleeve Cable entry (12)-14mm | 1 |
| 21 | 50 015 02 | Seal sleeve Cable entry (14)-16mm | 1 |
| 21 | 50 015 03 | Seal sleeve (16)-18mm | 1 |
| 22 | 50 726 00 | Entrance flange | 1 |
| 23 | 50 019 00 | Hex.socket hd screw M5X18-A4-70 | 2 |
| 24 | 133 525 | Earthing screw | 1 |
| 25 | 50 119 00 | Flat pin sheet | 1 |
| 26 | 50 013 00 | Air release valve | 2 |
| 27 | 50 019 00 | Hex.socket hd screw M5X18-A4-70 | 4 |
| 28 | 50 722 00 | Air release valve | 2 |
| 29 | 410 393 | Drive screw 4X5-A4 | 2 |
| 30 | 50 888 00 | Plate-blank | 1 |
| 31 | 50 021 30 | Hex.socket hd screw M8X25-A4-80 | 4 |
| 32 | 50 022 19 | Stud | 6 |
| 33 | 50 578 06 | Oil housing coated | 1 |
| 34 | 50 021 32 | Hex.socket hd screw M8X16-A4-70 | 6 |
| 35 | 140 114 | Protective washer | 6 |
| 36 | 50 316 01 | Sleeve | 12 |

| Pos. No | Part. No | Denomination | Qty/Version |
|---------|-----------|---------------------------------|-------------|
| | | | 390 |
| 37 | 50 801 00 | Impeller N 50Hz | 1 |
| 37 | 50 801 01 | Impeller N 60Hz | 1 |
| 38 | 50 022 27 | Plain washer 10.5X28X6 | 1 |
| 39 | 133 148 | Hex.socket hd screw M10X25 | 1 |
| 40 | 50 317 05 | Spacing sleeve | 6 |
| 41 | 50 321 04 | Diffuser coat. | 1 |
| 42 | 50 317 03 | Spacing sleeve | 6 |
| 43 | 50 022 22 | Hexagon nut M10-A4-70 | 12 |
| 44 | 50 319 02 | Antirootation device | 1 |
| 45 | 50 316 01 | Sleeve N | 6 |
| 45 | 50 316 02 | Sleeve H | 6 |
| 46 | 50 131 01 | Lock nut M10-A4-70 | 6 |
| 47 | 50 037 07 | O-ring 117.5X5.34 FPM | 1 |
| 48 | 50 037 13 | O-ring 12.37X2.62 FPM | 1 |
| 49 | 50 705 00 | Inspection screw | 1 |
| 50 | 50 037 25 | O-ring 156X3 FPM | 1 |
| 51 | 50 559 01 | Compression spring | 1 |
| 52 | 50 740 00 | Plate | 1 |
| 53 | 50 578 07 | Oil housing coated | 1 |
| 54 | 50 021 32 | Hex.socket hd screw M8X16-A4-70 | 6 |
| 55 | 133 060 | Protective plug | 6 |
| 56 | 50 789 00 | Mechanical seal | 1 |
| 57 | 50 750 00 | Adjusting washer | 10 |
| 58 | 50 205 05 | Parallel key 5X5X35-A4-220HB | 1 |
| 59 | 50 022 24 | Hexagon nut M10-A4-70 | 6 |
| 60 | 50 800 00 | Impeller H 50Hz | 1 |
| 60 | 50 800 02 | Impeller H 60Hz | 1 |
| 61 | 50 317 04 | Spacing sleeve | 6 |
| 62 | 50 320 09 | Diffuser coat. | 1 |
| 63 | 50 343 01 | Adjusting washer | 10 |
| 64 | 50 022 22 | Hexagon nut M10-A4-70 | 6 |
| 65 | 50 332 03 | Diffuser coat. | 1 |
| 66 | 50 316 01 | Sleeve | 6 |
| 67 | 50 802 00 | Impeller H 50Hz | 1 |
| 67 | 50 802 01 | Impeller H 60Hz | 1 |
| 68 | 50 317 03 | Spacing sleeve | 6 |
| 69 | 50 022 27 | Plain washer 10.5X28X6 | 1 |

| Pos. No | Part. No | Denomination | Qty/Version |
|---------|-----------|--|-------------|
| | | | 390 |
| 70 | 50 022 28 | Hex.socket hd screw M10X40-A4-70 | 1 |
| 71 | 50 141 07 | Diffuser coat. | 1 |
| 72 | 50 022 30 | Plain washer 8-A4-140HV | 6 |
| 73 | 50 131 01 | Lock nut M10-A4-70 | 6 |
| 74 | 50 720 00 | Strainer bottom | 1 |
| 75 | 130 818 | Retaining ring 25-SPRING STEEL | 1 |
| 76 | 50 040 05 | Insulating sleeve 0.5-6 MM2 | 8 |
| 76 | 50 040 05 | Insulating sleeve 0.5-6 MM2 | 5 |
| 77 | 50 040 04 | Flat pin sleeve 1-2.5MM2 | 6 |
| 77 | 50 040 09 | Flat pin sleeve 0.75-1.5MM2 | 2 |
| 77 | 50 040 09 | Flat pin sleeve 0.75-1.5MM2 | 8 |
| 77 | 50 040 09 | Flat pin sleeve 0.75-1.5MM2 | 5 |
| 78 | 50 221 02 | End sleeve 2.5 MM2; L=7 MM | 4 |
| 78 | 50 221 03 | End sleeve 4 MM2; L=10 MM | 4 |
| 79 | 105 839 | Cable tie 98X2.5 MM | 1 |
| 80 | - | Marking tape | 1 |
| 81 | 410 053 | Oil ISO VG 32 | * |
| 82 | 410 139 | Insulating hose D=12 MM | * |
| 83 | 50 992 00 | Sticker CUT HAZARD | 1 |
| 84 | 51 735 00 | Sticker | 2 |
| 84 | 51 735 01 | Sticker | 2 |
| 85 | 51 622 00 | Connection plate | 1 |
| 101 | 50 021 31 | Slotted head screw M8X10- A4 | 4 |
| 102 | 50 009 02 | Connection term boar | 1 |
| 102 | 50 009 01 | Connection term boar | 1 |
| 103 | 50 037 27 | O-ring 74.61X3.53 FPM | 1 |
| 104 | 50 037 09 | O-ring 119.5X3 FPM | 1 |
| 105 | 140 326 | Bearing cover | 1 |
| 106 | 50 037 26 | O-ring 47.2X3.53 FPM | 1 |
| 107 | 50 710 00 | Stator housing | 1 |
| 108 | 410 034 | Closed-end splice 3-6(AWG 12-10) L=18 | 3 |

| Pos. No | Part. No | Denomination | Qty/Version |
|---------|-----------|--|-------------|
| | | | 390 |
| 111 | 50 300 07 | Stator 19-14-2a 6-leads 50 Hz 2-poles 380V-415V D P2=8kW | 1 |
| 111 | 50 300 09 | Stator 19-14-2a 6-leads 50 Hz 2-poles 500V-550V D P2=8kW | 1 |
| 111 | 50 300 14 | Stator 19-14-2a 9-leads 60 Hz 2-poles 440V-480V YSER 220V-240V Y// P2=9,70kW/ 13hp | 1 |
| 111 | 50 300 16 | Stator 19-14-2a 6-leads 60 Hz 2-poles 575V-600V D P2=9,70kW/ 13hp | 1 |
| 112 | 140 337 | Ball bearing 20X47X14 | 1 |
| 113 | 50 302 01 | Shaft unit | 1 |
| 114 | 140 064 | Retaining ring SGH 62 | 1 |
| 115 | 140 059 | Ball bearing 25X62X25.4 | 1 |
| 116 | 50 037 17 | O-ring 183.5X3 FPM | 1 |
| 117 | 50 712 00 | Bearing holder | 1 |
| 118 | 50 534 00 | Mechanical seal | 1 |
| 119 | 50 021 29 | Hex.socket hd screw M8X40-A4-70 | 6 |
| 120 | - | Sticker | 1 |
| 206 | 51 831 00 | Contactor unit 50Hz 380V - 415V | 1 |
| 206,1 | 50 356 00 | Mounting plate | 1 |
| 206,2 | 410 814 | Contactor | 1 |
| 206,3 | 51 511 05 | Motor protector SMART | 1 |
| 206,5 | 50 018 04 | Hex.socket hd screw M4X6- A4-70 | 2 |
| 206,6 | 50 018 00 | Hex.socket hd screw M4X12-A4-70 | 2 |
| 206,7 | 50 018 00 | Hex.socket hd screw M4X12-A4-70 | 2 |
| 206,8 | 50 119 00 | Flat pin sheet | 2 |
| 206,11 | 50 509 00 | Cable set | 1 |
| 206,12 | 50 035 03 | Cable unit | 1 |
| 206 | 51 831 01 | Contactor unit 50Hz 500V | 1 |
| 206,1 | 50 356 00 | Mounting plate | 1 |
| 206,2 | 410 812 | Contactor | 1 |
| 206,3 | 51 511 05 | Motor protector SMART | 1 |
| 206,5 | 50 018 04 | Hex.socket hd screw M4X6- A4-70 | 2 |
| 206,6 | 50 018 00 | Hex.socket hd screw M4X12-A4-70 | 2 |
| 206,7 | 50 018 00 | Hex.socket hd screw M4X12-A4-70 | 2 |

| Pos. No | Part. No | Denomination | Qty/Version |
|---------|-----------|------------------------------------|-------------|
| | | | 390 |
| 206,8 | 50 119 00 | Flat pin sheet | 2 |
| 206,10 | 50 509 00 | Cable set | 1 |
| 206,11 | 50 035 03 | Cable unit | 1 |
| 206 | 51 831 06 | Contacteur unit | 1 |
| 206,1 | 50 356 00 | Mounting plate | 1 |
| 206,2 | 410 891 | Contacteur | 1 |
| 206,3 | 51 511 05 | Motor protector SMART | 1 |
| 206,4 | 50 018 00 | Hex.socket hd screw M4X12-A4-70 | 2 |
| 206,5 | 50 018 00 | Hex.socket hd screw M4X12-A4-70 | 2 |
| 206,6 | 50 018 04 | Hex.socket hd screw M4X6- A4-70 | 2 |
| 206,7 | 50 119 00 | Flat pin sheet | 2 |
| 206,9 | 50 509 00 | Cable set | 1 |
| 206,10 | 50 035 03 | Cable unit | 1 |
| 206 | 51 831 03 | Contacteur unit 60Hz 460V | 1 |
| 206,1 | 50 356 00 | Mounting plate | 1 |
| 206,2 | 410 814 | Contacteur | 1 |
| 206,3 | 51 511 06 | Motor protector SMART | 1 |
| 206,5 | 50 018 04 | Hex.socket hd screw M4X6- A4-70 | 2 |
| 206,6 | 50 018 00 | Hex.socket hd screw M4X12-A4-70 | 2 |
| 206,7 | 50 018 00 | Hex.socket hd screw M4X12-A4-70 | 2 |
| 206,8 | 50 119 00 | Flat pin sheet | 2 |
| 206,11 | 50 509 00 | Cable set | 1 |
| 206,12 | 50 035 03 | Cable unit | 1 |
| 206 | 51 831 04 | Contacteur unit 60Hz 575V | 1 |
| 206,1 | 50 356 00 | Mounting plate | 1 |
| 206,2 | 410 891 | Contacteur | 1 |
| 206,3 | 51 511 06 | Motor protector SMART | 1 |
| 206,5 | 50 018 04 | Hex.socket hd screw M4X6- A4-70 | 2 |
| 206,6 | 50 018 00 | Hex.socket hd screw M4X12-A4-70 | 2 |
| 206,7 | 50 018 00 | Hex.socket hd screw M4X12-A4-70 | 2 |
| 206,8 | 50 119 00 | Flat pin sheet | 2 |
| 206,11 | 50 509 00 | Cable set | 1 |
| 206,12 | 50 035 03 | Cable unit | 1 |

| Pos. No | Part. No | Denomination | Qty/Version |
|---------|-----------|--|-------------|
| | | | 390 |
| 206 | 51 727 04 | Contacteur unit 50Hz 380V - 415V Y/D | 1 |
| 206,1 | 50 078 02 | Mounting plate | 1 |
| 206,2 | 410 812 | Contacteur | 2 |
| 206,3 | 50 148 02 | Time relay | 1 |
| 206,4 | 51 511 05 | Motor protector SMART | 1 |
| 206,5 | 50 018 00 | Hex.socket hd screw M4X12-A4-70 | 4 |
| 206,6 | 50 018 04 | Hex.socket hd screw M4X6-A4-70 | 2 |
| 206,7 | 50 119 00 | Flat pin sheet | 2 |
| 206,8 | 50 018 00 | Hex.socket hd screw M4X12-A4-70 | 2 |
| 206,9 | 50 330 02 | Cable set | 1 |
| 206,10 | 50 331 02 | Cable set | 1 |
| 206,11 | 50 509 00 | Cable set | 1 |
| 206,12 | - | Wiring diagram | 1 |
| 206,13 | 410 871 | Interlock unit | 1 |
| 211 | 410 379 | Hex.socket hd screw M4X6-A4-70 | 3 |
| 300 | 50 102 00 | Phase shifter Starter (Phase shifter) 220V - 575 V Current range: 0 - 16 A | 1 |
| 300 | 50 102 01 | Phase shifter Starter 50/60 Hz Current range: 0 - 22 A | 1 |
| 300 | 50 102 02 | Phase shifter Starter 50/60 Hz Current range: 0 - 48 A | 1 |
| 400 | 50 100 01 | Plug contact 380V - 415 V Supply connection CEE 5-PLUG 32A | 1 |
| 400 | 50 100 10 | Plug contact 480V - 500 V - 16 A | 1 |
| 400 | 50 100 11 | Plug contact 480V - 500 V - 32 A | 1 |
| 800 | 50 085 12 | O-ring kit | 1 |
| 801 | - | Zinc anode kit | 1 |
| 900 | 51 173 00 | Basic repair kit | 1 |