



# Flygt 2610.160/.172



# Table of Contents

<b>1 Introduction.....</b>	<b>2</b>
1.1 Specially approved products.....	2
<b>2 Product Description.....</b>	<b>3</b>
2.1 Products included.....	3
2.2 The data plate.....	3
2.3 Product denomination.....	3
<b>3 Spare Parts.....</b>	<b>5</b>
3.1 Exploded view.....	5
3.2 List of parts.....	6

# 1 Introduction

## Purpose of this manual

The purpose of this manual is to provide necessary information on spare parts and accessories order.

## Disclaimer

Always use genuine Flygt parts. The use of other spare parts or accessories can invalidate any claims for warranty or compensation. Xylem does not take any responsibility for damages that are caused by the use of non-original parts. For more information, contact your local sales and service representative.

## Data for ordering spare parts

The following information is needed for spare part orders:

- Serial number of the product
- Part number
- Quantity of bulk material, see \* in tables

## 1.1 Specially approved products

### Qualification of personnel

Only Xylem or Xylem-authorized service personnel may undertake repair work on Ex-approved products.

### Dimensional accuracy inspection

Spare parts marked with (Ex) after the part number are subject to dimensional accuracy inspection.

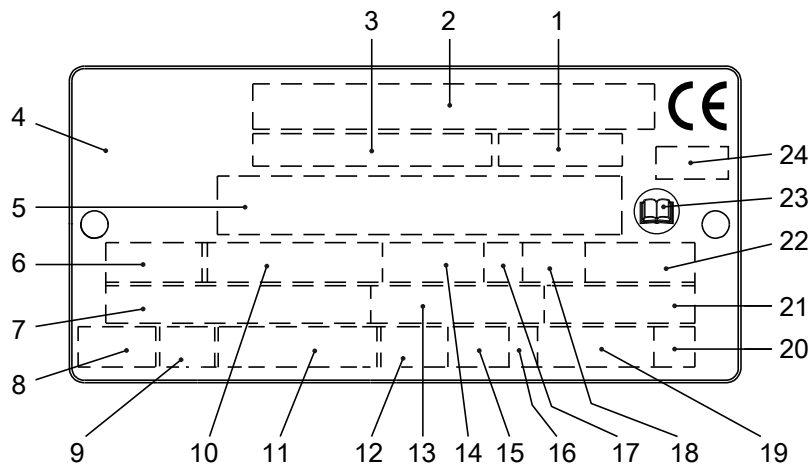
# 2 Product Description

## 2.1 Products included

Pump model	Standard	EX	MSHA	Drainage	Sludge
2610.160	X			X	
2610.172	X			X	

## 2.2 The data plate

The data plate is a metal label that is located on the main body of the products. The data plate lists key product specifications. Specially approved products also have an approval plate.



WS006257A

1. Curve code or Propeller code
2. Serial number
3. Product number
4. Country of origin
5. Additional information
6. Phase; type of current; frequency
7. Rated voltage
8. Thermal protection
9. Thermal class
10. Rated shaft power
11. International standard
12. Degree of protection
13. Rated current
14. Rated speed
15. Maximum submergence
16. Direction of rotation: L=left, R=right
17. Duty class
18. Duty factor
19. Product weight
20. Locked rotor code letter
21. Power factor
22. Maximum ambient temperature
23. Read installation manual
24. Notified body, only for EN-approved Ex products

Figure 1: The data plate

## 2.3 Product denomination

### Reading instruction

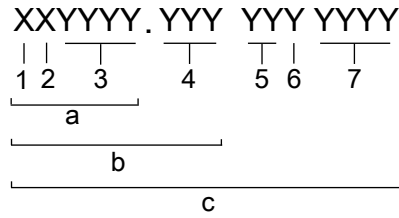
In this section, code characters are illustrated accordingly:

X = letter

Y = digit

The different types of codes are marked up with a, b and c. Code parameters are marked up with numbers.

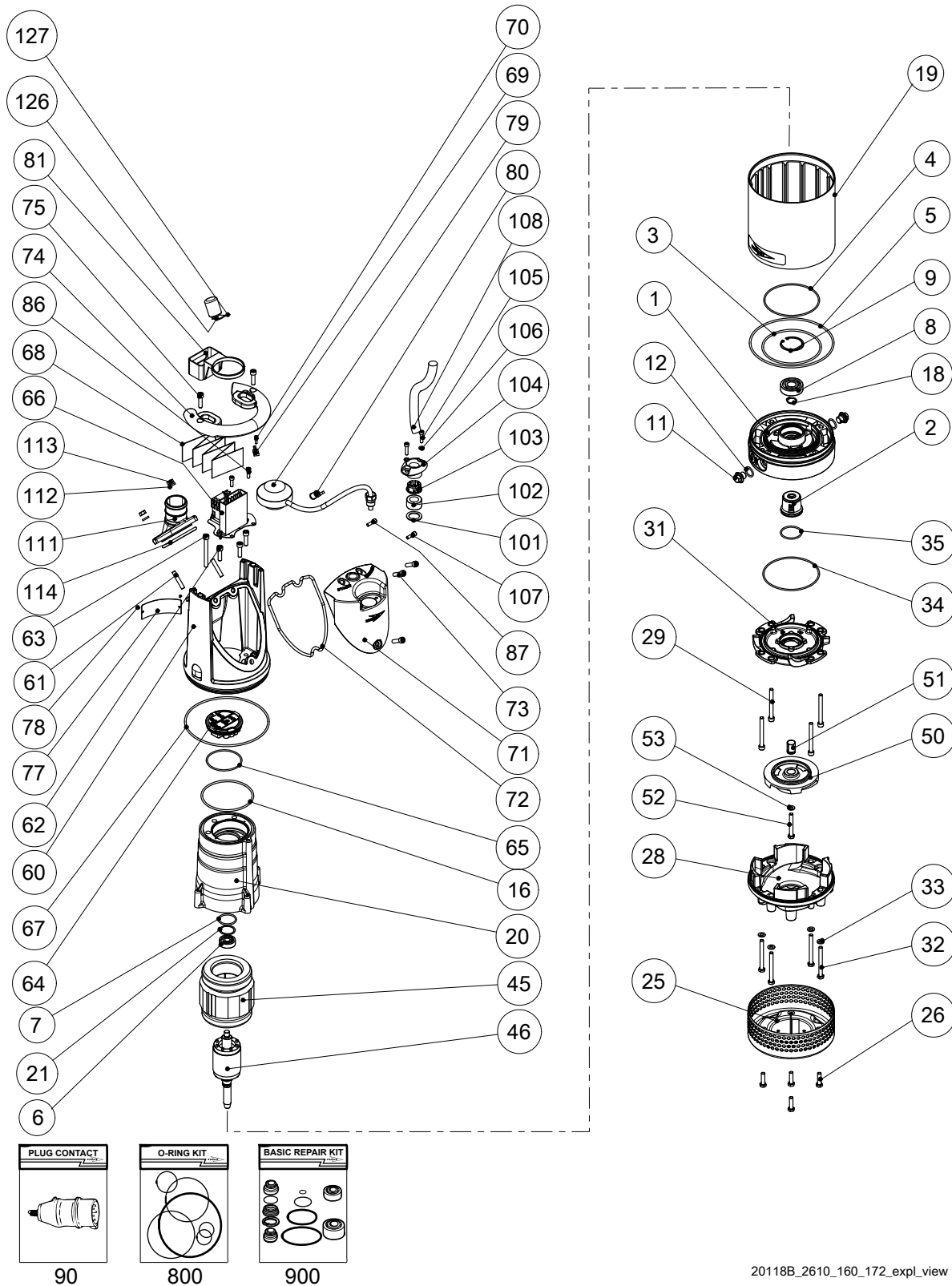
Codes and parameters



Type of Callout	Number	Indication
Type of code	a	Sales denomination
	b	Product code
	c	Serial number
Parameter	1	Hydraulic end
	2	Type of installation
	3	Sales code
	4	Version
	5	Production year
	6	Production cycle
	7	Running number

# 3 Spare Parts

## 3.1 Exploded view



20118B\_2610\_160\_172\_expl\_view

## 3.2 List of parts

Pos. No	Part. No	Denomination	Qty/Version	
			160	172
1	770 57 00	Intermediate piece	1	1
2	769 52 00	Mechanical seal	1	1
3	82 78 23	O-ring 127.0X4.0 NBR	1	1
4	82 74 77	O-ring 119.5X3 NBR	1	1
5	82 78 52	O-ring	1	1
6	83 33 11	Ball bearing 12X37X12 MM	1	1
7	82 81 00	O-ring 36.2X3.0 FPM	1	1
8	83 33 13	Ball bearing 20X52X15 MM	1	1
9	83 07 69	Retaining ring	1	1
11	428 22 17	Inspection screw	2	2
12	82 73 90	O-ring 19.2X3 NBR	2	2
14	90 17 52	Oil ISO VG 32	*	*
16	80 00 25	O-ring 114X4.0 NBR	1	1
17	718 05 00	Sticker CUT HAZARD	1	1
18	82 58 92	Retaining ring SGA 20	1	1
19	770 60 01	Outer casing	1	
19	770 60 00	Outer casing		1
20	770 55 02	Stator housing	1	
20	770 56 00	Stator housing		1
21	82 56 29	Spring washer	1	1
25	767 29 00	Strainer	1	1
26	81 48 57	Hexagon head screw M8X30-A4-70	4	4
28	767 30 00	Diffuser	1	1
		MT Diffusor material: NBR Not prepared for zinc anodes		
28	767 30 01	Diffuser	1	1
		MT Diffusor material: NBR Prepared for zinc anodes		
29	83 85 19	Hex.socket hd screw M8X80-A2-70	4	4
31	767 32 00	Seal housing cover	1	1
32	81 41 17	Hexagon head screw M8X80-A2-70	4	4
33	82 35 74	Plain washer 8-A4-170HV	4	4
34	82 74 77	O-ring 119.5X3 NBR	1	1
35	82 74 00	O-ring 44.2X3 NBR	1	1
44	94 05 87	Insulating hose D=14 MM	*	*
44	94 05 89	Insulating hose D=18 MM		*
45	638 96 07	Stator 13-10-2b	1	
		8-leads 1-phase 60 Hz 2-poles 115V //		
45	638 96 01	Stator 13-10-2b	1	
		4-leads 1-phase 50 Hz 2-poles 220V-240V		
45	638 96 03	Stator 13-10-2b	1	
		4-leads 1-phase 60 Hz 2-poles 220V-240V		
45	687 67 05	Stator 13-06-2b		1
		6-leads 3-phase 60 Hz 2-poles 200V-208V Y		

Pos. No	Part. No	Denomination	Qty/Version	
			160	172
45	687 67 01	Stator 13-06-2b 6-leads 3-phase 50 Hz 2-poles 220V-230V D 380V-400V Y 3-phase 60Hz 440V-480V Y 6-leads 3-phase 50 Hz 2-poles 220V-240V D		1
45	687 67 04	Stator 13-06-2b 6-leads 3-phase 60 Hz 2-poles 220V-240V D 6-leads 3-phase 60 Hz 2-poles 380V-400V Y		1
45	687 67 03	Stator 13-06-2b 9-leads 3-phase 60 Hz 2-poles 220V-240V Y// 9-leads 3-phase 60 Hz 2-poles 440V-480V YSER		1
45	687 67 07	Stator 13-06-2b 12-leads 3-phase 60 Hz 2-poles 220V-230V D// 12-leads 3-phase 60 Hz 2-poles 440V-460V DSER 12-leads 3-phase 60 Hz 2-poles 380V-400V Y//		1
45	687 67 08	Stator 13-06-2b 3-leads 3-phase 50 Hz 2-poles 380V-400V Y 3-leads 3-phase 60 Hz 2-poles 440V-480V Y		1
45	687 67 10	Stator 13-06-2b 6-leads 3-phase 50 Hz 2-poles 415V-440V Y		1
45	687 67 09	Stator 13-06-2b 3-leads 3-phase 50 Hz 2-poles 525V-550V Y 3-leads 3-phase 50 Hz 2-poles 500V Y 3-leads 3-phase 60 Hz 2-poles 575V-600V Y		1
45	687 68 03	Stator 13-06-2b 4-leads 1-phase 50 Hz 2-poles 110V		1
45	687 68 04	Stator 13-06-2b 4-leads 1-phase 60 Hz 2-poles 115V		1
45	687 68 01	Stator 13-06-2b 4-leads 1-phase 50 Hz 2-poles 220V-240V		1
45	687 68 02	Stator 13-06-2b 4-leads 1-phase 60 Hz 2-poles 220V-240V		1
46	770 70 02	Shaft unit 8-leads 1-phase 60 Hz 2-poles 115V //	1	
46	770 70 00	Shaft unit 4-leads 1-phase 60 Hz 2-poles 220V-240V 4-leads 1-phase 50 Hz 2-poles 220V-240V	1	



Pos. No	Part. No	Denomination	Qty/Version	
			160	172
46	770 70 01	Shaft unit 6-leads 3-phase 60 Hz 2-poles 220V-240V D 3-leads 3-phase 50 Hz 2-poles 525V-550V Y 4-leads 1-phase 50 Hz 2-poles 110V 4-leads 1-phase 60 Hz 2-poles 115V 9-leads 3-phase 60 Hz 2-poles 220V-240V Y// 12-leads 3-phase 60 Hz 2-poles 220V-230V D// 6-leads 3-phase 50 Hz 2-poles 415V-440V Y 6-leads 3-phase 50 Hz 2-poles 220V-230V D 380V-400V Y 12-leads 3-phase 60 Hz 2-poles 440V-460V DSER 6-leads 3-phase 60 Hz 2-poles 200V-208V Y 6-leads 3-phase 60 Hz 2-poles 380V-400V Y 12-leads 3-phase 60 Hz 2-poles 380V-400V Y// 4-leads 1-phase 50 Hz 2-poles 220V-240V 9-leads 3-phase 60 Hz 2-poles 440V-480V YSER 3-leads 3-phase 50 Hz 2-poles 500V Y 3-leads 3-phase 60 Hz 2-poles 575V-600V Y 6-leads 3-phase 50 Hz 2-poles 380V-400V Y 3-phase 60Hz 440V-480V Y 4-leads 1-phase 60 Hz 2-poles 220V-240V 6-leads 3-phase 50 Hz 2-poles 220V-240V D 3-leads 3-phase 50 Hz 2-poles 380V-400V Y 3-leads 3-phase 60 Hz 2-poles 440V-480V Y		1
47	83 44 24	Closed-end splice 3-6(AWG 12-10) L=18	2	
48	573 58 10	Electric cable	2	
50	767 36 00	Impeller 233 K-impeller MT 50Hz 1-phase Maximum temperature 40 DC Material Hard-Iron TM 237 K-impeller MT 50Hz 3-phase Maximum temperature 70 DC Material Hard-Iron TM	1	

Pos. No	Part. No	Denomination	Qty/Version	
			160	172
50	767 37 01	Impeller 235 K-impeller MT 60Hz 1-phase Maximum temperature 40 DC Material Hard-Iron TM 239 K-impeller MT 60Hz 3-phase Maximum temperature 70 DC Material Hard-Iron TM	1	
50	767 37 02	Impeller 293 K-impeller MT 60Hz 3-phase Maximum temperature 70 DC Material Hard-Iron TM 292 K-impeller MT 60Hz 1-phase Maximum temperature 40 DC Material Hard-Iron TM	1	
50	767 37 04	Impeller 233 K-impeller MT 50Hz 1-phase Maximum temperature 40 DC Material Hard-Iron TM 237 K-impeller MT 50Hz 1-phase Maximum temperature 70 DC Material Hard-Iron TM		1
50	767 36 00	Impeller 234 K-impeller MT 50Hz 1-phase Maximum temperature 40 DC Material Hard-Iron TM		1
50	767 37 03	Impeller 239 K-impeller MT 60Hz 3-phase Maximum temperature 70 DC Material Hard-Iron TM 235 K-impeller MT 60Hz 1-phase Maximum temperature 40 DC Material Hard-Iron TM		1
50	767 37 00	Impeller 236 K-impeller MT 60Hz 3-phase Maximum temperature 40 DC Material Hard-Iron TM		1
50	767 36 01	Impeller 238 K-impeller MT 50Hz 3-phase Maximum temperature 70 DC Material Hard-Iron TM		1
50	767 37 01	Impeller 240 K-impeller MT 60Hz 3-phase Maximum temperature 70 DC Material Hard-Iron TM		1
51	771 70 00	Sleeve unit	1	1
52	81 56 58	Hexagon head screw M8X60-A4-80	1	1
53	82 35 74	Plain washer 8-A4-170HV	1	1
60	777 59 00	Cover unit	1	1
	60,1 778 33 00	Air release valve	2	2
	60,2 770 47 00	Main cover	1	1
61	84 46 13	Stud M8X45-A2-70	2	2
62	82 00 35	Hex.socket hd screw M8X30-A2-70	3	3
63	83 85 19	Hex.socket hd screw M8X80-A2-70	1	1
64	773 44 01	Terminal plate unit 1-phase	1	1
	64,1 761 43 01	Terminal plate unit	1	1
	64,2 773 42 05	Cable set	1	1
64	773 44 00	Terminal plate unit 3-phase		1
	64,1 761 43 01	Terminal plate unit		1
	64,2 773 42 05	Cable set		1

Pos. No	Part. No	Denomination	Qty/Version	
			160	172
65	82 74 68	O-ring 74.5X3.0 NBR	1	1
66	770 71 13	Starter unit	1	
		Contactor unit 60Hz 1-phase 115V - 115V 1-phase Float switch CSA approved		
		Contactor unit 60Hz 1-phase 115V - 115V 1-phase CSA approved		
		Contactor unit 50Hz 1-phase 110V - 115V 1-phase Not CSA approved		
	66,1 770 46 00	Holder	1	
	66,5 84 02 49	Contactor	1	
	66,8 81 99 86	Hex.socket hd screw M4X16-A2-70	2	
	66,9 82 26 69	Lock nut	2	
	66,13 773 42 03	Cable set	1	
	66,14 773 42 04	Cable set	1	
	66,15 573 58 03	Electric cable AWG 16;L=70MM CSA	1	
	66,16 773 42 06	Cable set	1	
66	770 71 18	Starter unit	1	1
		Contactor unit 50Hz 3-phase 220V - 240V Float switch Not CSA approved		
		Contactor unit 60Hz 1-phase 220V - 240V 1-phase CSA approved		
		Contactor unit 50Hz 3-phase 220V - 240V Not CSA approved		
		Contactor unit 50Hz 1-phase 220V - 240V 1-phase Not CSA approved		
		Contactor unit 60Hz 3-phase 220V - 240V CSA approved		
		Contactor unit 60Hz 3-phase 220V - 240V Float switch CSA approved		
	66,1 770 46 00	Holder	1	1
	66,5 83 99 96	Contactor	1	1
	66,8 81 99 86	Hex.socket hd screw M4X16-A2-70	2	2
	66,9 82 26 69	Lock nut	2	2
	66,13 773 42 03	Cable set	1	1
	66,14 773 42 04	Cable set	1	1
	66,15 573 58 03	Electric cable AWG 16;L=70MM CSA	1	1
	66,16 773 42 06	Cable set	1	1
66	770 71 15	Starter unit	1	
		Capacitor unit 60Hz 1-phase 220V - 240V 1-phase Float switch CSA approved		
		Capacitor unit 50Hz 1-phase 220V - 240V 1-phase Float switch Not CSA approved		
		Capacitor unit 50Hz 1-phase 220V - 240V 1-phase Not CSA approved		
		Capacitor unit 60Hz 1-phase 220V - 240V 1-phase CSA approved		
	66,1 770 46 00	Holder	1	
	66,2 781 83 01	Capacitor	1	
	66,3 83 88 57	Capacitor 20MF 400V	1	

Pos. No	Part. No	Denomination	Qty/Version	
			160	172
	66,4 727 43 00	Start relay	1	
	66,6 81 99 86	Hex.socket hd screw M4X16-A2-70	2	
	66,7 82 26 69	Lock nut	2	
	66,10 717 51 00	Cable set	1	
	66,11 773 42 01	Cable set	1	
	66,12 773 42 02	Cable set	1	
	66,19 82 27 27	Lock nut M8-A4-70	2	
66	770 71 12	Starter unit		1
		Contactor unit 60Hz 1-phase 115V - 115V 1-phase CSA approved		
		Contactor unit 50Hz 1-phase 110V - 115V 1-phase Not CSA approved		
	66,1 770 46 00	Holder		1
	66,5 83 99 95	Contactor		1
	66,8 81 99 86	Hex.socket hd screw M4X16-A2-70		2
	66,9 82 26 69	Lock nut		2
	66,13 773 42 03	Cable set		1
	66,14 773 42 04	Cable set		1
	66,15 573 58 03	Electric cable AWG 16;L=70MM CSA		1
	66,16 773 42 06	Cable set		1
66	770 71 19	Starter unit		1
		Contactor unit 50Hz 3-phase 200V - 208V Not CSA approved		
	66,1 770 46 00	Holder		1
	66,5 83 00 61	Contactor		1
	66,8 81 99 86	Hex.socket hd screw M4X16-A2-70		2
	66,9 82 26 69	Lock nut		2
	66,13 773 42 03	Cable set		1
	66,14 773 42 04	Cable set		1
	66,15 573 58 03	Electric cable AWG 16;L=70MM CSA		1
	66,16 773 42 06	Cable set		1
66	770 71 20	Starter unit		1
		Contactor unit 50Hz 3-phase 380V - 400V Not CSA approved		
		Contactor unit 60Hz 3-phase 380V - 400V CSA approved		
		Contactor unit 50Hz 3-phase 380V - 400V Float switch Not CSA approved		
	66,1 770 46 00	Holder		1
	66,5 83 99 72	Contactor		1
	66,8 81 99 86	Hex.socket hd screw M4X16-A2-70		2
	66,9 82 26 69	Lock nut		2
	66,13 773 42 03	Cable set		1
	66,14 773 42 04	Cable set		1
	66,15 573 58 03	Electric cable AWG 16;L=70MM CSA		1
	66,16 773 42 06	Cable set		1

Pos. No	Part. No	Denomination	Qty/Version	
			160	172
66	770 71 21	Starter unit Contactor unit 60Hz 3-phase 440V - 480V CSA approved Contactor unit 50Hz 3-phase 415V - 440V Not CSA approved		1
	66,1 770 46 00	Holder		1
	66,4 762 56 00	Motor protector		1
	66,5 83 99 73	Contactor		1
	66,6 81 99 86	Hex.socket hd screw M4X16-A2-70		2
	66,7 82 26 69	Lock nut		2
	66,8 81 99 86	Hex.socket hd screw M4X16-A2-70		2
	66,9 82 26 69	Lock nut		2
	66,12 773 42 02	Cable set		1
	66,14 773 42 04	Cable set		1
	66,16 773 42 06	Cable set		1
	66,17 573 58 62	Single-core cable		1
66	770 71 22	Starter unit Contactor unit 50Hz 3-phase 500V - 500V Not CSA approved		1
	66,1 770 46 00	Holder		1
	66,5 83 99 74	Contactor		1
	66,8 81 99 86	Hex.socket hd screw M4X16-A2-70		2
	66,9 82 26 69	Lock nut		2
	66,13 773 42 03	Cable set		1
	66,14 773 42 04	Cable set		1
	66,15 573 58 03	Electric cable AWG 16;L=70MM CSA		1
	66,16 773 42 06	Cable set		1
66	770 71 23	Starter unit Contactor unit 50Hz 3-phase 525V - 550V Not CSA approved		1
	66,1 770 46 00	Holder		1
	66,4 762 56 00	Motor protector		1
	66,5 83 99 74	Contactor		1
	66,6 81 99 86	Hex.socket hd screw M4X16-A2-70		2
	66,7 82 26 69	Lock nut		2
	66,8 81 99 86	Hex.socket hd screw M4X16-A2-70		2
	66,9 82 26 69	Lock nut		2
	66,12 773 42 02	Cable set		1
	66,14 773 42 04	Cable set		1
	66,16 773 42 06	Cable set		1
	66,17 573 58 62	Single-core cable		1
66	770 71 24	Starter unit Contactor unit 60Hz 3-phase 575V - 600V CSA approved		1
	66,1 770 46 00	Holder		1
	66,4 762 56 00	Motor protector		1
	66,5 83 00 68	Contactor		1
	66,6 81 99 86	Hex.socket hd screw M4X16-A2-70		2
	66,7 82 26 69	Lock nut		2

Pos. No	Part. No	Denomination	Qty/Version	
			160	172
	66,8 81 99 86	Hex.socket hd screw M4X16-A2-70		2
	66,9 82 26 69	Lock nut		2
	66,12 773 42 02	Cable set		1
	66,14 773 42 04	Cable set		1
	66,16 773 42 06	Cable set		1
	66,17 573 58 62	Single-core cable		1
66	770 71 11	Starter unit	Capacitor unit 60Hz 1-phase 115V - 115V 1-phase Float switch CSA approved	1
			Capacitor unit 60Hz 1-phase 115V - 115V 1-phase CSA approved	
			Capacitor unit 50Hz 1-phase 110V - 115V 1-phase Float switch Not CSA approved	
			Capacitor unit 50Hz 1-phase 110V - 115V 1-phase Not CSA approved	
	66,1 770 46 00	Holder		1
	66,2 781 83 00	Capacitor		1
	66,3 83 88 83	Capacitor 80 MFD 275V		1
	66,4 727 43 01	Start relay		1
	66,6 81 99 86	Hex.socket hd screw M4X16-A2-70		2
	66,7 82 26 69	Lock nut		2
	66,10 717 51 00	Cable set		1
	66,11 773 42 01	Cable set		1
	66,12 773 42 02	Cable set		1
	66,19 82 27 27	Lock nut M8-A4-70		2
66	770 71 14	Starter unit	Capacitor unit 50Hz 1-phase 220V - 240V 1-phase Not CSA approved	1
			Capacitor unit 60Hz 1-phase 220V - 240V 1-phase Float switch CSA approved	
			Capacitor unit 60Hz 1-phase 220V - 240V 1-phase CSA approved	
			Capacitor unit 50Hz 1-phase 220V - 240V 1-phase Float switch Not CSA approved	
	66,1 770 46 00	Holder		1
	66,2 781 83 02	Capacitor		1
	66,3 83 88 40	Capacitor		1
	66,4 727 43 00	Start relay		1
	66,6 81 99 86	Hex.socket hd screw M4X16-A2-70		2
	66,7 82 26 69	Lock nut		2
	66,10 717 51 00	Cable set		1
	66,11 773 42 01	Cable set		1
	66,12 773 42 02	Cable set		1
	66,19 82 27 27	Lock nut M8-A4-70		2
67	82 78 52	O-ring	1	1
68	773 45 02	Connection plate	1	1

Pos. No	Part. No	Denomination	Qty/Version	
			160	172
69	773 46 00	Thermal detector unit	1	1
70	81 99 86	Hex.socket hd screw M4X16-A2-70	1	1
71	770 48 00	Cover	1	1
71	770 48 01	Cover Float switch	1	1
72	770 74 00	Gasket	1	1
73	82 00 35	Hex.socket hd screw M8X30-A2-70	3	3
74	770 49 00	Handle	1	1
75	82 00 35	Hex.socket hd screw M8X30-A2-70	2	2
77	630 68 00	Data plate USE 6306801 AS SPARE PART	1	1
78	82 20 88	Drive screw 4X5-A2/A4	2	2
79	761 04 05	Level regulator unit EU	1	1
		Contactor unit 50Hz 3-phase 220V - 240V Float switch Not CSA approved		
		Capacitor unit 50Hz 1-phase 220V - 240V 1-phase Float switch Not CSA approved		
		Capacitor unit 50Hz 1-phase 110V - 115V 1-phase Float switch Not CSA approved		
79	761 04 07	Level regulator unit US/CDN	1	1
		Capacitor unit 60Hz 1-phase 115V - 115V 1-phase Float switch CSA approved		
		Capacitor unit 60Hz 1-phase 220V - 240V 1-phase Float switch CSA approved		
		Contactor unit 60Hz 3-phase 220V - 240V Float switch CSA approved		
79	761 04 06	Level regulator unit EU		1
		Contactor unit 50Hz 3-phase 380V - 400V Float switch Not CSA approved		
80	84 66 53	Cable clamp STAINLESS STEEL, CR	1	1
81	626 56 00	Holder FOR LEVEL REGULATOR	1	1
86	82 00 15	Hex.socket hd screw M6X20-A2-70	2	2
87	82 00 15	Hex.socket hd screw M6X20-A2-70	1	1
90	83 49 90	Plug contact	1	1
		1-phase 60 Hz 0V - 125V Current range: 0 - 15A Plug combined with short cable: SUBCAB 14AWG/3 Supply connection: Plug NEMA 5-15 15A 125V		
		1-phase 60 Hz 0V - 125V Current range: 0 - 15A Plug combined with short cable: No cable Supply connection: Plug NEMA 5-15 15A 125V		
90	83 49 91	Plug contact	1	1
		1-phase 60 Hz 0V - 250V Current range: 0 - 15A Plug combined with short cable: No cable Supply connection: Plug NEMA 6-15 15A 250V		
		1-phase 60 Hz 0V - 250V Current range: 0 - 15A Plug combined with short cable: SUBCAB 14AWG/3 Supply connection: Plug NEMA 6-15 15A 250V		

Pos. No	Part. No	Denomination	Qty/Version	
			160	172
90	83 74 43	Cable with plug 1-phase 50 Hz 0V - 250V Current range: 0 - 16A Plug combined with short cable: SUBCAB 3G1,5 Supply connection: Plug 532.1U	1	1
90	84 06 65	Plug contact 1-phase 50 Hz 220V - 240V Current range: 0 - 16A Plug combined with short cable: SUBCAB 3G1,5 Supply connection: CEE 3-PLUG 16A 1-phase 50 Hz 220V - 240V Current range: 0 - 16A Plug combined with short cable: No cable Supply connection: CEE 3-PLUG 16A	1	1
90	83 49 65	Plug contact 1-phase 50/60 Hz 100V - 130V Current range: 0 - 16A Plug combined with short cable: No cable Supply connection: Plug K9000 YEL, 100-130 V, 16A	1	1
90	83 49 59	Plug contact 1-phase 50 Hz 0V - 250V Current range: 0 - 10A Plug combined with short cable: No cable Supply connection: Plug T12 SEV1011 L+N+PE, 250 V 10 A	1	1
90	83 49 66	Plug contact 1-phase 50 Hz 230V - 240V Current range: 0 - 13A Plug combined with short cable: No cable Supply connection: HDTP13B ( for FGB, fuse 13A)	1	1
90	83 49 43	Plug contact 3-phase 50 Hz 380V - 415V Current range: 0 - 16A Plug combined with short cable: No cable Supply connection: CEE 5-PLUG 16A		1
90	83 49 44	Plug contact 3-phase 50 Hz 380V - 415V Current range: 0 - 32A Plug combined with short cable: No cable Supply connection: CEE 5-PLUG 32A		1
90	83 49 45	Plug contact 3-phase 50 Hz 380V - 415V Current range: 0 - 16A Plug combined with short cable: No cable Supply connection: CEE 4-PLUG 16A		1
90	84 06 60	Plug contact 3-phase 50 Hz 380V - 415V Current range: 0 - 32A Plug combined with short cable: No cable Supply connection: CEE 4-PLUG 32A		1
91	94 21 00	Motor cable subcab Plug contact 1-phase 60 Hz 0V - 125V Current range: 0 - 15A Plug combined with short cable: SUBCAB 14AWG/3 Supply connection: Plug NEMA 5-15 15A 125V Plug contact 1-phase 60 Hz 0V - 250V Current range: 0 - 15A Plug combined with short cable: SUBCAB 14AWG/3 Supply connection: Plug NEMA 6-15 15A 250V	*	*
91	94 20 40	Motor cable subcab Plug contact 1-phase 50 Hz 220V - 240V Current range: 0 - 16A Plug combined with short cable: SUBCAB 3G1,5 Supply connection: CEE 3-PLUG 16A	*	*
101	82 40 61	Plain washer (10)-22 MM	1	1



Pos. No	Part. No	Denomination	Qty/Version	
			160	172
102	84 37 95	Seal sleeve (10)-12 MM SUBCAB 3G1,5 10 - 11mm Max 750V SUBCAB 3G1,5 10 - 11mm Max 250V SUBCAB 3G2,5 11 - 12mm Max 750V SUBCAB 4G1,5 10,50 - 11,50mm Max 750V	1	1
102	84 37 97	Seal sleeve (14)-16 MM Screened 3x1,5 13,50 - 14,90mm Max 1000V SUBCAB 14AWG/4 14,20 - 15,20mm Max 600V SUBCAB 4G1,5+2x1,5 16 - 17mm Max 750V	1	1
102	84 37 96	Seal sleeve (12)-14 MM SUBCAB 4G2,5 12,50 - 13,50mm Max 750V SUBCAB 14AWG/3 13,20 - 14,20mm Max 600V Screened 3x1,5 13,50 - 14,90mm Max 1000V	1	1
102	84 37 99	Seal sleeve (18)-20 MM SUBCAB 14AWG/7 18 - 20mm Max 600V SUBCAB S3x2,5+3x2,5/3+S(4x0,5) 18 - 20mm Max 1000V	1	1
102	84 37 98	Seal sleeve (16)-18 MM SUBCAB 12AWG/4 17 - 18mm Max 600V	1	1
103	678 58 12	Cable clip (10)-12 MM SUBCAB 3G1,5 10 - 11mm Max 750V SUBCAB 3G1,5 10 - 11mm Max 250V SUBCAB 3G2,5 11 - 12mm Max 750V SUBCAB 4G1,5 10,50 - 11,50mm Max 750V	1	1
103	678 58 16	Cable clip (14)-16 MM Screened 3x1,5 13,50 - 14,90mm Max 1000V SUBCAB 14AWG/4 14,20 - 15,20mm Max 600V SUBCAB 4G1,5+2x1,5 16 - 17mm Max 750V	1	1
103	678 58 14	Cable clip (12)-14 MM SUBCAB 4G2,5 12,50 - 13,50mm Max 750V SUBCAB 14AWG/3 13,20 - 14,20mm Max 600V Screened 3x1,5 13,50 - 14,90mm Max 1000V	1	1
103	678 58 20	Cable clip (18)-20 MM SUBCAB 14AWG/7 18 - 20mm Max 600V SUBCAB S3x2,5+3x2,5/3+S(4x0,5) 18 - 20mm Max 1000V	1	1
103	678 58 18	Cable clip (16)-18 MM SUBCAB 12AWG/4 17 - 18mm Max 600V	1	1
104	686 87 00	Entrance flange	1	1
105	83 02 79	Hex.socket hd screw M6X25-A4-70	2	2
106	82 35 73	Plain washer 6-A4-170	2	2
107	82 00 15	Hex.socket hd screw M6X20-A2-70	1	1

Pos. No	Part. No	Denomination	Qty/Version	
			160	172
107	82 00 15	Hex.socket hd screw M6X20-A2-70	2	2
108	773 47 01	Motor cable unit SUBCAB 3G1,5 10 - 11mm L= 20m Max 250V	1	1
108	773 47 02	Motor cable unit SUBCAB 3G1,5 10 - 11mm L= 20m Max 750V	1	1
108	773 47 05	Motor cable unit SUBCAB 4G1,5 10,50 - 11,50mm L= 20m Max 750V	1	1
108	773 47 10	Motor cable unit SUBCAB 4G1,5+2x1,5 16 - 17mm L= 20m Max 750V	1	1
108	773 47 06	Motor cable unit SUBCAB 4G2,5 12,50 - 13,50mm L= 20m Max 750V	1	1
108	773 47 03	Motor cable unit SUBCAB 3G2,5 11 - 12mm L= 20m Max 750V	1	1
108	773 47 04	Motor cable unit SUBCAB 14AWG/3 13,20 - 14,20mm L= 16m Max 600V	1	1
108	773 47 07	Motor cable unit SUBCAB 14AWG/4 14,20 - 15,20mm L= 16m Max 600V	1	1
108	773 47 15	Motor cable unit SUBCAB 14AWG/7 18 - 20mm L= 16m Max 600V	1	1
108	773 47 08	Motor cable unit SUBCAB 12AWG/4 17 - 18mm L= 16m Max 600V	1	1
108	773 47 09	Motor cable unit Screened 3x1,5 13,50 - 14,90mm L= 20m Max 1000V		1
108	773 47 19	Motor cable unit SUBCAB S3x2,5+3x2,5/3+S(4x0,5) 18 - 20mm L= 20m Max 1000V		1
110	83 18 24	Coupling part Discharge Connection DN 50 Thread: ISO G2A Outer Quick coupling: Storz aluminium	1	1
110	83 18 46	Coupling part Discharge Connection DN 75 Thread: ISO G3A Outer Quick coupling: Storz aluminium	1	1
111	724 45 00	Discharge connection DN 50 Hose 2" aluminium DN 50 Hose Thread: ISO G2A Outer Second outlet included aluminium	1	1
111	724 45 01	Discharge connection DN 50 Thread: ISO G2A Outer Quick coupling: Storz aluminium DN 50 Hose Thread: ISO G2A Outer Second outlet included aluminium DN 50 Thread: ISO G2A Outer aluminium	1	1
111	724 45 03	Discharge connection DN 50 Thread: NPT 2-11 1/2 Outer aluminium	1	1
111	724 44 00	Discharge connection DN 75 Hose Thread: ISO G3A Outer Second outlet included aluminium DN 75 Hose 3" aluminium	1	1
111	724 44 01	Discharge connection DN 75 Hose Thread: ISO G3A Outer Second outlet included aluminium DN 75 Thread: ISO G3A Outer aluminium DN 75 Thread: ISO G3A Outer Quick coupling: Storz aluminium	1	1

Pos. No	Part. No	Denomination	Qty/Version	
			160	172
111	724 44 03	Discharge connection DN 75 Thread: NPT 3-8 Outer aluminium	1	1
112	82 37 03	Plain washer A2-170HV M8	2	2
113	82 23 32	Hexagon nut M8-A4-70	2	2
114	82 74 08	O-ring 79.2X5.7-NBR	1	1
120	82 20 88	Drive screw 4X5-A2/A4	2	2
121	630 76 00	Plate HOT WATER PRODUCT	1	1
126	82 23 30	Hexagon nut M5-A4-70	2	2
127	429 92 02	Plate	1	1
130	554 23 52	Starter Start 156-B Single phase 50 Hz 220V - 240 V - 10 A Overload supervision Supply connection on terminal Cable gland diameter: 13 - 20 mm CSA approved	1	
130	554 23 47	Starter Start 156-B Single phase 60 Hz 115V - 115 V - 16 A Overload supervision Supply connection on terminal Cable gland diameter: 13 - 20 mm CSA approved	1	
130	554 23 53	Starter Start 156-B Single phase 60 Hz 220V - 240 V - 10 A Overload supervision Supply connection on terminal Cable gland diameter: 13 - 20 mm CSA approved	1	
130	593 04 29	Starter 151 Single phase 50 Hz 220V - 240 V - 10 A Overload supervision Supply connection on terminal Cable gland diameter: 13 - 18 mm CSA approved	1	
130	593 04 26	Starter 161 Single phase 60 Hz 115V - 115 V - 16 A Overload supervision Supply connection on terminal Cable gland diameter: 13 - 18 mm CSA approved	1	
130	554 23 50	Starter Start 156-B Single phase 50 Hz 220V - 240 V - 6 A Overload supervision Supply connection on terminal Cable gland diameter: 13 - 20 mm CSA approved		1
130	554 23 46	Starter Start 156-B Single phase 60 Hz 115V - 115 V - 12 A Overload supervision Supply connection on terminal Cable gland diameter: 13 - 20 mm CSA approved		1
130	554 23 51	Starter Start 156-B Single phase 60 Hz 220V - 240 V - 6 A Overload supervision Supply connection on terminal Cable gland diameter: 13 - 20 mm CSA approved		1
130	593 04 22	Starter 161 Single phase 60 Hz 115V - 115 V - 12 A Overload supervision Supply connection on terminal Cable gland diameter: 13 - 18 mm CSA approved		1
130	593 04 28	Starter 161 Single phase 60 Hz 220V - 240 V - 6 A Overload supervision Supply connection on terminal Cable gland diameter: 13 - 18 mm CSA approved		1

Pos. No	Part. No	Denomination	Qty/Version	
			160	172
130	648 36 02	Starter 350 3-phase 50 Hz 380V - 415 V Current range: 2,50 - 4 A Overload supervision Phase sequence indicator Supply connection CEE 5-PLUG 16A Cable gland diameter: 10 - 20 mm Not CSA approved		1
130	648 36 12	Starter 350 3-phase 50 Hz 380V - 415 V Current range: 2,50 - 4 A Overload supervision Phase sequence indicator Supply connection CEE 5-PLUG 32A Cable gland diameter: 10 - 20 mm Not CSA approved		1
130	648 36 43	Starter 350 3-phase 50 Hz 220V - 240 V Current range: 4 - 6,30 A Overload supervision Phase sequence indicator Supply connection on terminal Cable gland diameter: 10 - 20 mm Not CSA approved		1
130	648 36 42	Starter 350 3-phase 50 Hz 380V - 400 V Current range: 2,50 - 4 A Overload supervision Phase sequence indicator Supply connection on terminal Cable gland diameter: 10 - 20 mm Not CSA approved 350 3-phase 50 Hz 415V - 440 V Current range: 2,50 - 4 A Overload supervision Phase sequence indicator Supply connection on terminal Cable gland diameter: 10 - 20 mm Not CSA approved		1
130	648 36 41	Starter 350 3-phase 50 Hz 500V - 500 V Current range: 1,60 - 2,50 A Overload supervision Phase sequence indicator Supply connection on terminal Cable gland diameter: 10 - 20 mm Not CSA approved		1
130	554 30 02	Starter 351 3-phase 50 Hz 380V - 415 V Current range: 2,50 - 4 A Overload supervision Phase sequence indicator Supply connection CEE 5-PLUG 16A Cable gland diameter: 10 - 20 mm Not CSA approved		1
130	554 30 12	Starter 351 3-phase 50 Hz 380V - 415 V Current range: 2,50 - 4 A Overload supervision Phase sequence indicator Supply connection CEE 5-PLUG 32A Cable gland diameter: 11 - 21 mm Not CSA approved		1
130	554 30 42	Starter 351 3-phase 50 Hz 380V - 415 V Current range: 2,50 - 4 A Overload supervision Phase sequence indicator Supply connection on terminal Cable gland diameter: 11 - 21 mm Not CSA approved		1
130	554 30 71	Starter 351 3-phase 50 Hz 500V - 500 V Current range: 1,60 - 2,50 A Overload supervision Phase sequence indicator Supply connection CEE 4-PLUG 32A Cable gland diameter: 11 - 21 mm Not CSA approved		1

Pos. No	Part. No	Denomination	Qty/Version	
			160	172
130	554 30 51	Starter 351 3-phase 50 Hz 440V - 500 V Current range: 1,60 - 2,50 A Overload supervision Phase sequence indicator Supply connection on terminal Cable gland diameter: 11 - 21 mm Not CSA approved		1
130	554 30 63	Starter 351 3-phase 50 Hz 220V - 240 V Current range: 4 - 6,30 A Overload supervision Phase sequence indicator Supply connection on terminal Cable gland diameter: 11 - 21 mm Not CSA approved		1
130	554 20 03	Starter 356 3-phase 60 Hz 220V - 240 V Current range: 4 - 6 A Overload supervision Supply connection on terminal Cable gland diameter: 9 - 18 mm CSA approved 356 3-phase 60 Hz 200V - 208 V Current range: 4 - 6 A Overload supervision Supply connection on terminal Cable gland diameter: 9 - 18 mm CSA approved		1
130	554 20 02	Starter 356 3-phase 50/60 Hz 380V - 415 V Current range: 2,50 - 4 A Overload supervision Supply connection on terminal Cable gland diameter: 9 - 18 mm CSA approved 356 3-phase 60 Hz 440V - 480 V Current range: 2,50 - 4 A Overload supervision Supply connection on terminal Cable gland diameter: 9 - 18 mm CSA approved		1
130	554 20 01	Starter 356 3-phase 60 Hz 575V - 600 V Current range: 1,60 - 2,50 A Overload supervision Supply connection on terminal Cable gland diameter: 9 - 18 mm CSA approved		1
130	554 21 03	Starter 356 3-phase 60 Hz 220V - 240 V Current range: 4 - 6 A Overload supervision Supply connection on terminal Cable gland diameter: 13 - 25 mm CSA approved 356 3-phase 60 Hz 200V - 208 V Current range: 4 - 6 A Overload supervision Supply connection on terminal Cable gland diameter: 13 - 25 mm CSA approved		1
130	554 21 02	Starter 356 3-phase 60 Hz 440V - 480 V Current range: 2,50 - 4 A Overload supervision Supply connection on terminal Cable gland diameter: 13 - 25 mm CSA approved 356 3-phase 50/60 Hz 380V - 415 V Current range: 2,50 - 4 A Overload supervision Supply connection on terminal Cable gland diameter: 13 - 25 mm CSA approved		1

Pos. No	Part. No	Denomination	Qty/Version	
			160	172
130	554 21 01	Starter 356 3-phase 60 Hz 575V - 600 V Current range: 1,60 - 2,50 A Overload supervision Supply connection on terminal Cable gland diameter: 13 - 25 mm CSA approved		1
130	554 25 02	Starter BCD 4 3-phase 50 Hz 380V - 415 V Current range: 2,60 - 3,70 A Overload supervision Phase sequence indicator Supply connection CEE 5-PLUG 16A Cable gland diameter: 13 - 18 mm Not CSA approved		1
130	554 25 12	Starter BCD 4 3-phase 50 Hz 380V - 415 V Current range: 2,60 - 3,70 A Overload supervision Phase sequence indicator Supply connection CEE 5-PLUG 32A Cable gland diameter: 13 - 18 mm Not CSA approved		1
130	554 25 42	Starter BCD 4 3-phase 50 Hz 380V - 415 V Current range: 2,60 - 3,70 A Overload supervision Phase sequence indicator Supply connection on terminal Cable gland diameter: 13 - 18 mm Not CSA approved		1
800	779 78 00	O-ring kit NBR	1	1
801	779 88 00	Anode unit	1	1
816	779 91 00	Wear part kit MT, 50HZ, K-IMP. CURVE :233,234,237	1	1
816	779 91 02	Wear part kit MT, K-IMP. 50HZ:233,237 60HZ: 235,236,239	1	1
816	779 91 01	Wear part kit MT, 50HZ, K-IMP. CURVE CODE:238		1
816	779 91 03	Wear part kit MT, 60HZ, K-IMP. CURVE CODE:240		1
816	779 91 04	Wear part kit MT, 60HZ, K-IMP. CURVE CODE:235,239		1
900	779 84 00	Basic repair kit NBR TYPE P SSIC/SSIC	1	1
903	784 80 00	Low suction kit	1	1