

Parts List

8108.010 Magnum



Table of Contents

| | |
|----------------------------------|----------|
| Introduction..... | 2 |
| Specially approved products..... | 2 |
| Product Description..... | 3 |
| The data plate..... | 3 |
| Exploded Views..... | 4 |
| 8108.010..... | 4 |
| Spare Parts..... | 5 |
| 8108.010..... | 5 |

Introduction

Purpose of this manual

The purpose of this manual is to provide necessary information on spare parts and accessories order.

Disclaimer

Always use genuine Grindex parts. The use of other spare parts or accessories can invalidate any claims for warranty or compensation. Grindex does not take any responsibility for damages that are caused by the use of non-original parts. For more information, contact your local sales and service representative.

Data for ordering spare parts

The following information is needed for spare part orders:

- Serial number of the product
- Part number
- Quantity of bulk material, see * in tables

Specially approved products

Qualification of personnel

Only Grindex or Grindex-authorized service personnel may undertake repair work on Ex-approved products.

Dimensional accuracy inspection

Spare parts marked with (Ex) after the part number are subject to dimensional accuracy inspection.

Product Description

Products included

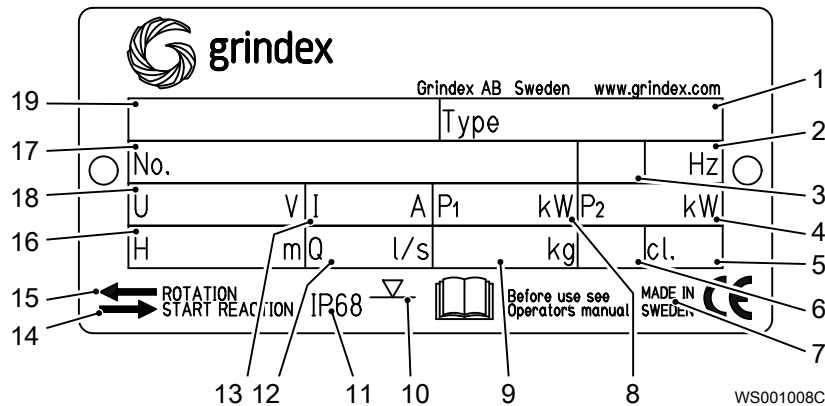
| Pump model | Approvals |
|-----------------|-----------|
| Magnum 8108.010 | Standard |

The data plate

Introduction

The data plate is a metal label located on the main body of the pump. The data plate lists key product specifications.

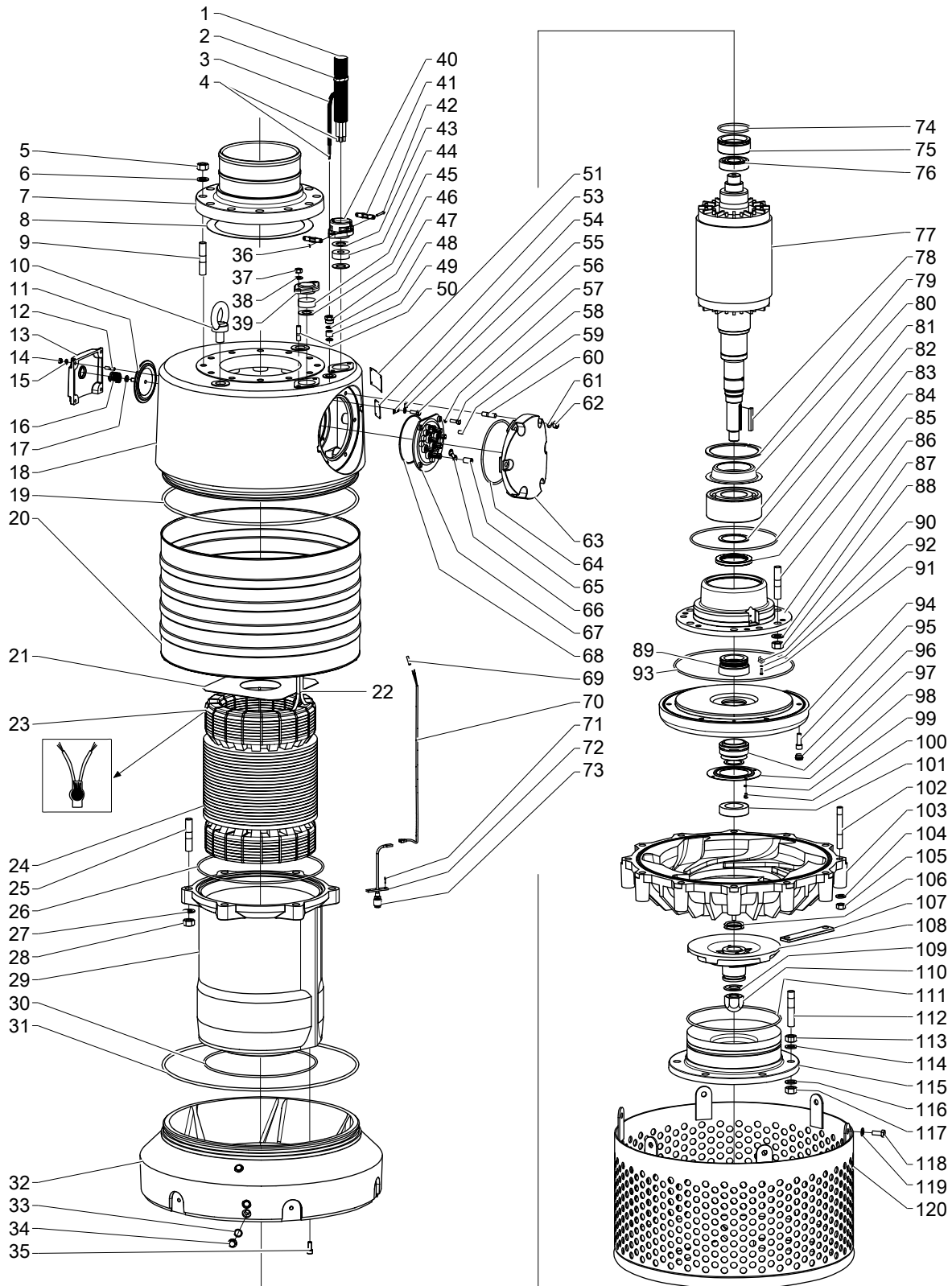
The data plate



1. Pump type number
2. Frequency
3. Phases, type of current
4. Rated shaft power
5. Thermal class
6. Locked rotor code-letter
7. Country of origin
8. Maximum power consumption
9. Product weight
10. Maximum submersion depth
11. Degree of protection
12. Maximum capacity
13. Rated current
14. Direction of the start reaction
15. Direction of the impeller rotation
16. Maximum head
17. Serial number
18. Rated voltage
19. Pump model

Exploded Views

8108.010



20177A_8108_010

Spare Parts

8108.010

| Pos. No | Part. No | Denomination | Qty/ Version | |
|---------|-----------|---|--|-----|
| | | | 010 | |
| 1 | 410 852 | Motor cable subcab | SUBCAB 4G10+S(2x0,5) 24 - 26mm | * |
| 1 | 410 853 | Motor cable subcab | SUBCAB 4G16+S(2x0,5) 26 - 28mm | * |
| 1 | 410 854 | Motor cable subcab | SUBCAB 4G25+S(2x0,5) 32 - 34mm | * |
| 1 | 410 355 | Motor cable | SUBCAB 1AWG/3-2-1-GC 40,70 - 42,70mm | * |
| 2 | 132 297 | Cable tie | | 15 |
| 3 | 130 963 | Control cable subcab 2X1.5 OD = 10-11 MM | | * |
| 4 | 50 221 00 | End sleeve 0.75 MM ² ; L=6 MM | | 2 |
| 4 | 50 221 05 | End sleeve 10 MM ² ; L=12 MM | | 6 |
| 4 | 50 221 01 | End sleeve 1.5 MM ² ; L=7 MM | | 2 |
| 4 | 50 221 06 | End sleeve 16 MM ² ; L=12 MM | | 3-6 |
| 4 | 50 221 07 | End sleeve 25 MM ² ; L=15 MM | | 3-6 |
| 5 | 50 025 00 | Hexagon nut M20-A2-70 | | 12 |
| 6 | 50 025 02 | Plain washer 20-A2-A-170 | | 12 |
| 7 | 50 470 00 | Discharge connection | DN 150 Hose | 1 |
| 7 | 50 471 00 | Discharge connection | DN 200 Hose | 1 |
| 7 | 50 472 00 | Discharge connection | DN 250 Hose | 1 |
| 7 | 50 408 00 | Discharge connection | DN 150 Thread : ISO G6 Inner | 1 |
| 7 | 50 408 01 | Discharge connection | DN 200 Thread : ISO G8 Inner | 1 |
| 7 | 50 408 02 | Discharge connection | DN 250 Thread : ISO G10 Inner | 1 |
| 7 | 50 408 03 | Discharge connection | DN 150 Thread : NPT 6-8 Inner | 1 |
| 7 | 50 408 04 | Discharge connection | DN 200 Thread : NPT 8-8 Inner | 1 |
| 7 | 50 408 05 | Discharge connection | DN 250 Thread : NPT 10-8 Inner | 1 |
| 7 | 50 533 00 | Discharge connection | DN 150 Drilled according to : ANSI B16.1-89; tab.5 | 1 |
| 7 | 50 533 01 | Discharge connection | DN 200 Drilled according to : ANSI B16.1-89; tab.5 | 1 |
| 7 | 50 533 02 | Discharge connection | DN 250 Drilled according to : ANSI B16.1-89; tab.5 | 1 |
| 8 | 50 409 00 | Gasket 250 PN10 | | 1 |

| Pos. No | Part. No | Denomination | Qty/ Version | |
|---------|-----------|------------------------------|--|---|
| | | | 010 | |
| 9 | 50 025 03 | Stud | 12 | |
| 10 | 132 277 | Lifting eye bolt M16 | 2 | |
| 11 | 130 745 | Valve | 1 | |
| 12 | 50 021 12 | Stud M8X22-A2-70 | 4 | |
| 13 | 50 404 00 | Cover | 1 | |
| 14 | 50 021 37 | Hexagon nut M8-A4-70 | 4 | |
| 15 | 132 289 | Plain washer 8-A2-170 | 4 | |
| 16 | 130 752 | Spring | 1 | |
| 17 | 50 022 26 | Plain washer 10-A4-170 | 1 | |
| 18 | 51 306 00 | Main cover | 1 | |
| 19 | 50 037 33 | O-ring 588.0X8.4 NBR | 1 | |
| 20 | 50 405 00 | Outer casing | 1 | |
| 21 | 50 539 00 | Insulating sheet | 1 | |
| 22 | 112 469 | Insulating hose | * | |
| 22 | 132 354 | Insulating hose D=20 MM | * | |
| 24 | 50 484 07 | Stator 35-25-4a | 6-leads 50 Hz 4-poles 400V D 690V Y P2=57kW 6-leads 60 Hz 4-poles 460V D P2=67kW/90hp | 1 |
| 24 | 50 484 09 | Stator 35-25-4a | 6-leads 50 Hz 4-poles 500V-550V D P2=57kW | 1 |
| 24 | 50 482 07 | Stator 35-25-2a | 6-leads 50 Hz 400V D 690V Y P2=57kW 6-leads 60 Hz 460V D P2=67kW/90hp | 1 |
| 24 | 50 482 09 | Stator 35-25-2a | 6-leads 50 Hz 500V-550V D P2=57kW 6-leads 60 Hz 575V D P2=67kW/90hp | 1 |
| 24 | 50 482 10 | Stator 35-25-2a | 12-leads 60 Hz 460V DSER 380V Y// P2=67kW/90hp 12-leads 60 Hz 230V D// P2=67kW/ 90hp | 1 |
| 24 | 50 484 11 | Stator 35-25-4a | 12-leads 60 Hz 4-poles 460V DSER 380V Y// P2=67kW/90hp | 1 |
| 25 | 50 025 03 | Stud | 6 | |
| 26 | 50 037 30 | O-ring 379.3X5.7 NBR | 1 | |
| 27 | 50 025 02 | Plain washer 20-A2- A-170 | 6 | |
| 28 | 50 025 00 | Hexagon nut M20-A2-70 | 6 | |
| 29 | 51 299 00 | Stator housing | 1 | |
| 30 | 131 929 | O-ring 339.3X5.7 NBR | 1 | |
| 31 | 50 037 33 | O-ring 588.0X8.4 NBR | 1 | |
| 32 | 51 300 00 | Oil housing | 1 | |

| Pos. No | Part. No | Denomination | Qty/ Version |
|---------|-----------|-------------------------------------|---|
| | | | 010 |
| 33 | 133 064 | O-ring 19.2X3 NBR | 4 |
| 34 | 133 063 | Inspection screw | 4 |
| 35 | 50 022 17 | Hex.socket hd screw M10X25-A4-70 | 3 |
| 36 | 131 402 | Hexagon nut M5-A4-70 | 2-4 |
| 37 | 132 280 | Hexagon nut M12-A2-70 | 4 |
| 38 | 132 274 | Plain washer 12-A2-170 | 4 |
| 39 | 132 394 | Cover | 1 |
| 40 | 132 340 | Entrance flange | 1-2 |
| 41 | 131 943 | Clamp | Cable entry (26)-28mm 2 |
| 41 | 131 941 | Clamp | Cable entry (32)-34mm Cable entry (33)-35mm Cable entry (35)-37mm Cable entry (40)-42mm 2-4 |
| 41 | 50 216 03 | Clamp | Cable entry (26)-28mm Cable entry (24)-26mm 4 |
| 42 | 132 327 | Slotted head screw | Cable entry (26)-28mm Cable entry (24)-26mm 2-4 |
| 42 | 130 992 | Slotted head screw | Cable entry (32)-34mm Cable entry (33)-35mm Cable entry (35)-37mm Cable entry (40)-42mm 2-4 |
| 43 | 131 950 | Plain washer | 2-4 |
| 43 | 132 336 | Plain washer | 2 |
| 43 | 132 312 | Plain washer | 2 |
| 43 | 132 341 | Plain washer | 2-4 |
| 43 | 131 934 | Plain washer | 2 |
| 44 | 131 935 | Seal sleeve | 1-2 |
| 44 | 132 337 | Seal sleeve | 1 |
| 44 | 132 315 | Seal sleeve | 1-2 |
| 44 | 132 339 | Seal sleeve | 1 |
| 44 | 131 933 | Seal sleeve | 1 |
| 44 | 410 718 | Seal sleeve | 1 |
| 45 | 132 453 | Plug | 1 |
| 46 | 131 950 | Plain washer | 2 |
| 46 | 410 598 | Plain washer | 2 |
| 47 | 132 343 | Gland screw | 1 |
| 48 | 132 344 | Plain washer | Aux. cable entry (10)-12mm 2 |
| 48 | 132 455 | Plate | Plugged aux. cable entry 2 |
| 49 | 132 345 | Seal sleeve | Aux. cable entry (10)-12mm 1 |

| Pos. No | Part. No | Denomination | Qty/ Version |
|---------|-----------|-----------------------------------|-----------------|
| | | | 010 |
| 49 | 132 454 | Plug | 1 |
| 50 | 132 279 | Stud M12X30-A2-70 | 4 |
| 51 | 50 888 00 | Data plate | 1 |
| 52 | 410 000 | Drive screw 4X5-A2/A4 | 2 |
| 53 | - | Sticker | 1 |
| 54 | 132 347 | Earthing plate FM/PTB | 2 |
| 55 | - | Cable lug 0.50-1.65; M8 | 1 |
| 55 | 131 799 | Cable lug D8 16 MM2 | 1-2 |
| 55 | 132 609 | Cable lug D8 25 MM2 | 1-2 |
| 56 | 132 288 | Hexagon head screw M8X20-A2-70 | 2 |
| 57 | 132 289 | Plain washer 8-A2-170 | 4 |
| 58 | 130 642 | Hexagon head screw M8X25-A2-70 | 4 |
| 60 | 132 279 | Stud M12X30-A2-70 | 6 |
| 61 | 132 274 | Plain washer 12-A2-170 | 6 |
| 62 | 132 280 | Hexagon nut M12-A2-70 | 6 |
| 63 | 50 403 00 | Cover | 1 |
| 64 | 50 037 45 | O-ring 184.3X5.7 NBR | 1 |
| 67 | 133 119 | Con.term.board unit | 1 |
| 67,1 | 133 120 | Connection term boar | 1 |
| 67,2 | 132 350 | Closing link | 3 |
| 67,3 | 132 353 | Domed cap nut | 12 |
| 67,4 | 132 351 | Domed cap nut | 4 |
| 68 | 410 833 | O-ring 139.5X3 NBR | 1 |
| 69 | 131 273 | Butt connector | 1 |
| 70 | 50 698 00 | Cable unit FLS10 | 1 |
| 71 | 50 018 00 | Hex.socket hd screw | 2 |
| 72 | 50 402 00 | Bracket | 1 |
| 73 | 50 486 01 | Level sensor FLS10 | 1 |
| 74 | 132 355 | O-ring 89.1X5.7 NBR | 1 |
| 75 | 132 357 | Bearing guide | 1 |
| 76 | 132 358 | Ball bearing 40X90X23 | 1 |
| 77 | 50 394 00 | Shaft unit | 1 |
| 78 | 410 193 | Parallel key 12X8X63 | 1 |
| 79 | 50 279 02 | Retaining ring | 1 |
| 80 | 50 417 01 | Bearing cover | 1 |
| 81 | 50 391 01 | Ball bearing | 1 |

| Pos. No | Part. No | Denomination | Qty/ Version |
|---------|-----------|----------------------------------|-----------------|
| | | | 010 |
| 82 | 50 278 01 | Retaining ring | 1 |
| 83 | 132 415 | O-ring 259.3X5.7 NBR | 1 |
| 84 | 50 763 00 | Gasket | 1 |
| 85 | 50 025 04 | Stud | 6 |
| 86 | 50 418 04 | Bearing holder | 1 |
| 87 | 50 025 02 | Plain washer 20-A2-A-170 | 6 |
| 88 | 50 025 00 | Hexagon nut M20-A2-70 | 6 |
| 89 | - | Mechanical seal | 1 |
| 90 | 50 414 00 | Lock washer | 1 |
| 91 | 50 020 08 | Hexagon head screw | 1 |
| 93 | 50 037 31 | O-ring 359.3X5.7 NBR | 1 |
| 94 | 50 401 04 | Oil housing coated L N | 1 |
| 94 | 50 401 03 | Oil housing coated H | 1 |
| 95 | 130 957 | Hex.socket hd screw M12X30-A2-70 | 6 |
| 96 | 50 480 00 | Protective plug | 6 |
| 97 | 50 396 01 | Mechanical seal | 1 |
| 98 | 50 413 00 | Lock washer | 1 |
| 100 | 50 020 08 | Hexagon head screw | 4 |
| 101 | 50 595 00 | Spacer | 1 |
| 102 | 132 263 | Stud L | 12 |
| 102 | 50 024 02 | Stud M16X110-A2-70 N H | 12 |
| 103 | 51 302 00 | Diffuser coat. L | 1 |
| 103 | 51 311 00 | Diffuser coat. N | 1 |
| 103 | 51 304 00 | Diffuser coat. H | 1 |
| 105 | 132 256 | Hexagon nut M16-A2-70 | 12 |
| 106 | 50 174 03 | Washer 0.3 MM | 5 |
| 106 | 50 174 04 | Adjusting washer 0.5 MM | 3 |
| 107 | 50 541 00 | Bracket | 2 |
| 108 | 50 583 00 | Impeller L50Hz | 1 |
| 108 | 50 388 01 | Impeller L60Hz | 1 |
| 108 | 50 385 02 | Impeller N50Hz | 1 |
| 108 | 50 385 03 | Impeller N60Hz | 1 |
| 108 | 50 382 04 | Impeller H50Hz | 1 |
| 108 | 50 382 05 | Impeller H60Hz | 1 |
| 109 | 50 415 00 | Lock washer | 1 |
| 110 | 50 410 00 | Acorn nut | 1 |
| 111 | 410 563 | O-ring 289.3X5.7 NBR L | 1 |

| Pos. No | Part. No | Denomination | Qty/ Version |
|---------|-----------|---------------------------------|-----------------|
| | | | 010 |
| 111 | 132 411 | O-ring 399.3X5.7 NBR N | 1 |
| 111 | 50 037 32 | O-ring 279.3X5.7 NBR H | 1 |
| 112 | 50 024 03 | Stud M16X1.5X100-A2-70 L N | 6 |
| 112 | 50 025 06 | Stud M20X1.5X110-A2-70 H | 6 |
| 113 | 50 024 04 | Hexagon nut M16X1.5-A2 L N | 6 |
| 113 | 50 025 07 | Hexagon nut M20X1.5-A2 H | 6 |
| 114 | 132 258 | Plain washer 16-A2-A-170 L N | 6 |
| 114 | 50 025 02 | Plain washer 20-A2-A-170 H | 6 |
| 115 | 51 303 00 | Suction cover L | 1 |
| 115 | 51 312 00 | Suction cover N | 1 |
| 115 | 51 305 00 | Suction cover H | 1 |
| 116 | 132 258 | Plain washer 16-A2-A-170 L N | 6 |
| 116 | 50 025 02 | Plain washer 20-A2-A-170 H | 6 |
| 117 | 50 024 04 | Hexagon nut M16X1.5-A2 L N | 6 |
| 117 | 50 025 07 | Hexagon nut M20X1.5-A2 H | 6 |
| 118 | 132 407 | Hexagon head screw M12X30-A2-70 | 6 |
| 119 | 132 274 | Plain washer 12-A2-170 | 6 |
| 120 | 50 406 00 | Strainer | 1 |